

**AGENDA**  
**WOODSIDE FIRE PROTECTION DISTRICT**  
BOARD OF DIRECTORS MEETING

October 29th, 2024

7:00 P.M.

808 Portola Road

Portola Valley, CA 94028

**(Note: Public May Attend In-Person At the Above Address And  
May Also Attend Virtually at the Zoom Meeting Information Listed Below)**

Woodside Fire is inviting you to a scheduled Zoom meeting.

Join Zoom Meeting

<https://us02web.zoom.us/j/81915778700?pwd=T2ZmSGpKaWtSVE5GaEp1ekJRckJsZz09>

Meeting ID: 819 1577 8700

Passcode: 055074

One tap mobile

+14086380968,,81915778700# US (San Jose) 16699006833,,81915778700# US

+(San Jose)

Dial by your location

+1 408 638 0968 US (San Jose)

+1 669 900 6833 US (San Jose)

+1 253 215 8782 US (Tacoma)

+1 346 248 7799 US (Houston)

+1 312 626 6799 US (Chicago)

+1 646 876 9923 US (New York)

+1 301 715 8592 US (Washington DC) Meeting ID: 819 1577 8700 Find your local number:

<https://us02web.zoom.us/j/81915778700?pwd=T2ZmSGpKaWtSVE5GaEp1ekJRckJsZz09>

*District meetings are accessible to people with disabilities. Individuals who need special assistance or a disability-related modification or accommodation (including auxiliary aids or services) to participate in this meeting, or who have a disability and wish to request an alternative format for the agenda, meeting notice, agenda packet or other writings that may be distributed at the meeting, should contact the Fire Chief, by 9:00 a.m. the day before the meeting at (650) 851-1594 and/or [info@woodsidefire.org](mailto:info@woodsidefire.org). Notification in advance of the meeting will enable the District to make reasonable arrangements to ensure accessibility to this meeting and the materials related to it. Attendees to this meeting are reminded that other attendees may be sensitive to various chemical-based products.*

*If you wish to speak to the Board, please let staff know before the meeting, if possible, to assist the Board in recognizing you at the appropriate time.*

## **I. CALL TO ORDER AND ROLL CALL**

## **II. GENERAL PUBLIC COMMENT**

*This item is reserved for persons wishing to address the Board on any matters within the subject matter jurisdiction of the District that are not listed on the agenda. Speakers will be limited to three minutes, unless otherwise specified by the Presiding Officer. Members of the public will be given an opportunity to speak on each agenda item at the time it is called.*

*We request that members of the public who wish to address the Board should let staff know before the meeting to assist the Board in recognizing them at the appropriate time.*

## **III. CONSENT AGENDA**

*Items of a routine or non-controversial nature are placed on the consent agenda. The Board will take public comment on the agenda items before approval of the consent agenda. Speakers will be limited to three minutes, unless otherwise specified by the Presiding Officer. All items on the consent agenda are approved by one action. Any Board member may request that any item be withdrawn from the consent agenda for separate discussion and action.*

- C1. Approval of Minutes of the September 24th, 2024, Meeting of the Board of Directors
- C2. Accept Financial Reports September 2024
- C3. Accept Statement of Accounts September 2024
- C4. Accept Warrant List September 2024
- C5. Accept Fiscal Year Estimate vs Actual 24-25

## **IV. REGULAR AGENDA BUSINESS ITEMS**

*Members of the public will be provided an opportunity to speak on each agenda item before or during the Board's consideration of the item. Speakers will be limited to three minutes, unless otherwise specified by the Presiding Officer.*

R1. Consider adopting Resolution 24-15 that will (1) establish an Account with the California CLASS Joint Powers Authority Investment Program, (2) authorize the Fire Chief and Finance Manager to order the deposit or withdrawal of District monies in the Account and execute and deliver any necessary or advisable documents as stated in the resolution, and (3) establish that District funding in the account will not exceed \$10 million dollars.

R2. Consider adopting Resolution 24-16 that will (1) declare as exempt surplus land under the Surplus Land Act a portion of real property, located at 3111 Woodside Road, Woodside, California 94062 (APN 072-191-070), that is to be leased to T-Mobile for antenna facilities

(the “Leased Area”), (2) determine that this declaration of exempt surplus land is not subject to the California Environmental Quality Act, and (3) authorize the Fire Chief to execute a proposed Second Amendment of the Site Agreement with T-Mobile for the Leased Area as stated in the resolution.

## **V. STAFF REPORTS**

- Training
- EMS
- Prevention
- Operations
- Facilities and IT

## **VI. FIRE CHIEF’S REPORT**

- District Updates

## **VII. REPORT ON WRITTEN COMMUNICATIONS**

## **VIII. REQUESTS FOR ITEMS ON FUTURE AGENDAS**

## **IX. CLOSED SESSION**

### **CS1. PUBLIC EMPLOYMENT/DISABILITY RETIREMENT APPLICATION (Government Code section 54957(b))**

Title: Fire Fighter Paramedic

## **ADJOURNMENT**

*Public records that relate to any item on the agenda for a regular board meeting are available for public inspection. Those records distributed less than 72 hours prior to the meeting are available for public inspection at the same time they are distributed to all members, or a majority of members of the Board. The Board has designated the office of the Woodside Fire Protection District, located at 808 Portola Road, Portola Valley, CA, for the purpose of making those public records available for inspection. The documents are also available on the District’s Internet Web site. The website is located at [www.woodsidefire.org](http://www.woodsidefire.org).*

**Woodside Fire Protection District  
Board of Directors Meeting  
Administration Building  
808 Portola Rd.  
Portola Valley, CA 94028  
September 24<sup>th</sup>, 2024**

The meeting of the Board of Directors was called to order at 7:00 pm by Director Miller

**Directors Present:** Miller, Holthaus, Foster

**Directors Absent: None**

**Staff:** Chief Cuschieri, Chief Zabala, Finance Manager Liu, Chief Giuliacci, Chief Douthit, Chief Hird

*Zoom Attendees:* Chief McKenzie, Captain O’Leary, Chief Nannini, Captain Armanino

**Other Attendees:** *Zoom Attendees:* WFPD General Counsel Rubin Cruse (RPLG), Rich Dean (Stanford)

**I. GENERAL PUBLIC COMMENT**

There were no public comments made on Non-Agendized Topics.

**II. CONSENT AGENDA** The Board considered the following consent agenda items:

- C1. Approval of Minutes of the August 27th, 2024, Meeting of the Board of Directors
- C2. Accept Financial Reports August 2024
- C3. Accept Statement of Accounts August 2024
- C4. Accept Warrant List August 2024
- C5. Accept Fiscal Year Estimate vs. Actual 24-25

There were no public comments on the consent agenda.

Director Holthaus motioned to approve the consent agenda and approve Items C1, C2, C3, C4, and C5 as submitted, 2<sup>nd</sup> by Director Foster. Motion passed 3-0.

**IV. REGULAR AGENDA BUSINESS ITEMS**

R1. N5 Sensor presentation by Fire Marshall Kim Giuliacci

Fire Marshal Giuliacci provided an update on the status and implementation of the N5 sensors within the Fire District. Highlights of the update are as follows:

- **Current Sensor Deployment:**
  - A total of 13 N5 sensors have been installed in the Fire District.
  - An additional 25 sensors have been placed on Stanford-owned properties.
  - The remaining 12 sensors have been deployed in coordination with Palo Alto.

- **Implementation Overview:**
  - The implementation process was smooth, despite minor challenges, which were resolved as the project progressed.
  - The collaboration between the Fire District, Stanford, and Palo Alto was highly successful.
  - Strong support from local residents allowed the team to install sensors on private land, which was crucial for optimal placement.
- **Installation Process:**
  - Each sensor was installed with multiple sub-sensors and is powered by a solar panel. The sensor poles were installed using quick-setting foam cement, ensuring secure placement.
  - A specialized app was used to determine optimal placement, ensuring that each sensor receives adequate sunlight year-round.
- **Sensor Functionality:**
  - The N5 sensors mimic human olfactory senses, detecting various scents and analyzing them to identify potential wildfire risks.
  - The system uses AI technology, which has been trained to recognize wildfire-specific smells. The sensors have a low false alarm rate of less than 0.1%.
  - In addition to detecting wildfires, the sensors also monitor air quality, with all data transmitted to a centralized dashboard for analysis.
- **Sensor Placement:**
  - Sensors in the Fire District were placed 1 to 2 miles apart, in accordance with the company's recommendations. This spacing allows the district to be fully covered.
  - A sensor was successfully installed at Windy Hill, thanks to the cooperation of local property owners.
- **Notification and Response:**
  - When a potential wildfire is detected, notifications are sent to the Fire District's Battalion Chiefs and Fire Marshal. The process includes alerting San Mateo Dispatch and deploying an engine for smoke investigation if needed.
- **Collaboration and Community Engagement:**
  - A flyer has been distributed to property owners near the sensors, providing information about the sensors and contact details for any questions.
  - Each sensor also features a placard with a QR code, linking to further information about the collaborative efforts between the Fire District, Stanford, Palo Alto, and the Fire Safe Council.

There were no public comments on this agenda item.

## V. STAFF REPORTS

Director Miller expressed excitement to see photos of the vegetation clearing being done on Cervantes.

There were no public comments on this agenda item

---

## VI. FIRE CHIEF'S REPORT

## **District Updates**

### **SDRMA Workers' Compensation Insurance Review:**

- The Fire District recently met with SDRMA, the workers' comp insurance provider, for a comprehensive policy review.
- Attendees included Chief Zabala, Tracy, Lori, and Chief Cuschieri.
- The review resulted in identifying several issues within the policy, leading to a refund of \$87,869.
- The District had initially paid approximately \$1.4 million, and the reimbursement has already been received, as the payment had been prepaid.

### **DOJ Live Scan Background Check Authorization:**

- Chief Cuschieri completed the Department of Justice Live Scan background check process, which allows the district to conduct background checks for future employees.
- This process, which began in December 2022, took nearly two years to complete.
- The new system will save the district money by reducing the need for external investigators in background checks.

### **Strike Team Deployment:**

- On September 7th, a crew of four members was deployed to the Davis Fire in Nevada, then reassigned to the Airport Fire in San Bernardino County.
- The crew returned on September 17th, along with all fire apparatus and resources.

### **Personnel Promotions:**

- EMS Battalion Chief Scott McKenzie was officially promoted from his interim position to permanent status.
- Captain Chris O'Leary was also promoted to a permanent position as the District's Training Captain.

### **Fire Prevention and Staff Updates:**

- Dominic Flocchini, the Fire Prevention Intern, completed his paid internship and transitioned into a part-time DSI Inspector role while continuing to serve as a Fuel Mitigation Specialist.
- A new part-time, non-benefited Accounts Payable (AP) employee, Grace Chow, will start soon. She will work 1-2 days a week with Tracy, assisting with AP and other tasks.

### **Station 7 T-Mobile Update:**

- The District finalized an agreement with T-Mobile regarding reimbursement for services provided since June 2022, following T-Mobile's use of PG&E services at Station 7.

### **San Mateo County Updates:**

- The San Mateo County Fire Chiefs submitted a letter of support to the president of the San Mateo Community College District for a new paramedic school program.
- The program aims to address the shortage of paramedics in the county, as local departments struggle to hire paramedics due to immediate hiring upon certification.

## **State Fire Updates:**

- As of the report date, California has experienced 6,332 wildfires, burning just under 1 million acres and damaging or destroying 1,687 structures.

There were no public comments on this agenda item

## **VII. REPORT ON WRITTEN COMMUNICATIONS**

- Thank you, letters, received from Boy Scout Pack 65, Den 13 for a station tour.
- Two thank you letters from citizens regarding separate medical calls in District 19.
- Thank you and acknowledgement letter from a citizen regarding the Districts support in CERT and acknowledging Selena Brown for her continued support within the community.

There were no public comments on this agenda item.

## **VIII. REQUESTS FOR ITEMS ON FUTURE AGENDAS**

There were no requests for items on future agendas.

## **IX. CLOSED SESSION**

No closed session.

**Adjournment:** The meeting was adjourned at 7:27 P.M.

The next scheduled meeting will be held October 29th, at 7:00 P.M at the WFPD Administration Building, 808 Portola Rd. Portola Valley, CA 94028.

Respectfully Submitted,

Tom Cuschieri – Board Secretary

## WFPD Board of Directors

### Zoom Meetings 2024

1/30/2024 <https://youtu.be/FcgTSaGsqxY>

2/27/2024 <https://youtu.be/p9NUFqEmTEQ>

3/26/2024 <https://youtu.be/6imBzWXkk64>

4/30/2024 <https://youtu.be/AUy-r6SHFO8>

5/28/2024 <https://youtu.be/k3fTB97My8I>

6/27/2024 <https://youtu.be/xarfzgzzFhk> 7/23/2024

Special Meeting <https://youtu.be/SBjiIRTbv98>

7/30/2024 <https://youtu.be/35DNUNb7cMI>

8/27/2024 <https://youtu.be/p4rRq2oOlc4>

9/24/2024 <http://bit.ly/3NFOWqe> Passcode: Br0B.5LM



Woodside Fire Protection District  
Financial Statement

<b>Mon, Sep 30, 2024</b>		<b>2023-2024</b>	<b>2024-2025</b>	<b>+ (-)</b>
<b>Cash Balance - September 1, 2024</b>		<b>\$27,089,856.97</b>	<b>\$19,826,575.61</b>	<b>(\$7,263,281.36)</b>
<b>ACCT#</b>	<b>REVENUE</b>			
1041	FY24-25 Supplemental Secured 08/24		\$3,654.59	
2660-1	Cal Fire - Strike Team		\$15,272.98	
2660-3	Fire Prevention Inspection Fees		\$15,287.14	
2660-4	Sprinkler*Permit Program		\$3,968.65	
2660-5	SMC - LTCMD reimb		\$5,695.28	
2660-6	15% Chipping Maint Fees-SMC LTCMD		\$466.38	
2660-6	PV Town - July 24 invoice		\$1,056.82	
2660-6	PV Town-24/25 chipping program		\$7,460.39	
2660-6	FireSafe SMC-Invoice		\$1,932.64	
2658-1	ChargePoint Revenue-Aug 2024		\$283.96	
2658-3	US Bank CalCard rebate		\$1,469.93	
4111	City of Redwood -Q3/24 EMS Salary		\$13,458.96	
4111	SMC - LTCMD reimb		\$872.96	
4111	FireSafe SMC-Invoice		\$1,123.96	
4111	PV Town - July 24 invoice		\$588.88	
4111	United State Treasure-Q3/2022 941x		\$2,323.21	
4413	PV Town-24/25 chipping program		\$2,666.57	
4413	OptumRx Overpayment refund		\$34.70	
4415	FireSafe SMC-PR Tax		\$807.66	
4415	SMC - LTCMD reimb		\$183.73	
4415	PV Town-24/25 chipping program		\$2,934.95	
4415	PV Town - July 24 invoice		\$407.19	
4451	PV Town-24/25 chipping program		\$224.00	
5156-1	S. McKenzie		\$25.69	
5156-1	WFPD House Fund		\$531.29	
5612	SDRMA - WC Insurance refund		\$91,970.09	
5612	SMC - LTCMD reimb		\$325.52	
5612	FireSafe SMC-WC		\$1,460.01	
5612	PV Town-24/25 chipping program		\$5,545.10	
5612	PV Town - July 24 invoice		\$838.29	
5733-12	City of Palo Alto - N5 reimb		\$22,297.80	
5733-20	PV Town-24/25 chipping program		\$48,763.67	
5733-20	PV Town - July 24 invoice		\$5,211.10	
5733-20	FireSafe SMC-Chipping Proj		\$15,951.60	
5733-55	State of CA - SMC Grant		\$73,583.56	
5733-85	PV Town-24/25 chipping program		\$666.67	
5733-86	PV Town-24/25 chipping program		\$650.00	
5876-5	SMCO - Union Bank Fees (August 24)		(\$131.82)	
7011	SMC - LTCMD reimb		\$54,805.26	
7311-4	Cal Fire - Strike Team OT		\$4,503.51	
	Total Revenue In September 2024	\$3,145,070.87	\$409,172.87	
		<b>\$30,234,927.84</b>	<b>\$20,235,748.48</b>	<b>(\$9,999,179.36)</b>
<b>EXPENDITURES :</b>				
	September 2024-2025	\$4,707,607.56	\$2,096,263.84	(\$2,611,343.72)
	September 24/25 adj entries	(\$2,822.59)	\$6,770.91	
	QB Balance October 1, 2024	<b>\$25,530,142.87</b>	<b>\$18,146,255.55</b>	<b>(\$7,383,887.32)</b>
	September 24/25 Outstanding Checks		\$124,149.82	
	Cash Balance October 1, 2024		<b>\$18,270,405.37</b>	

*Woodside Fire Protection District  
Statement of Accounts*

<b>ACCT#</b>	<b>30-Sep-2024 Account</b>	<b>Amount Budgeted</b>	<b>Warrants DRAWN LAST MONTH</b>	<b>Warrants Drawn This Period</b>	<b>Warrants Drawn YTD</b>	<b>Budget Balance</b>	<b>% Used 12/12 Months</b>
4111	Salary	\$13,453,092	\$2,136,902	\$1,111,008	\$3,229,542	\$10,223,550	24%
4321	Dist Retirement	\$4,877,872	\$3,003,342	\$187,724	\$3,191,066	\$1,686,806	65%
4413	District Medical	\$2,613,245	\$394,838	\$205,769	\$597,906	\$2,015,339	23%
4415	Medicare&SS	\$209,391	\$34,967	\$18,598	\$49,232	\$160,159	24%
4451	Dist Umpl Benefits	\$12,586	-\$217	\$7	-\$435	\$13,021	-3%
4631	Dist Empl Benefits	\$39,414	\$5,159	\$2,598	\$7,757	\$31,657	20%
<b>ACCT#</b>	<b>SUB-TOTAL</b>	<b>\$21,205,600</b>	<b>\$5,574,992</b>	<b>\$1,525,705</b>	<b>\$7,075,070</b>	<b>\$14,130,530</b>	<b>33%</b>
5121	Clothing	\$148,501	\$32,339	\$0	\$32,339	\$116,162	22%
5156	Household	\$37,000	\$2,587	\$3,220	\$5,249	\$31,751	14%
5165	Medical Expense	\$224,102	\$41,722	\$2,393	\$44,115	\$179,987	20%
5199	Office Expense	\$4,750	\$264	\$235	\$498	\$4,252	10%
5212	Computer Program	\$242,530	\$38,991	\$8,205	\$47,197	\$195,333	19%
5231	Small Tools	\$3,000	\$0	\$0	\$0	\$3,000	0%
5332	Membership	\$12,125	\$1,000	\$0	\$1,000	\$11,125	8%
5341	Legal Notices	\$76,800	\$0	\$0	\$0	\$76,800	0%
5415	Maint Equipment	\$394,900	\$29,361	\$49,042	\$78,403	\$316,497	20%
5416	Gas * Oil	\$130,100	\$19,199	\$15,765	\$34,964	\$95,136	27%
5417	Maint Tires	\$15,000	\$2,882	\$6,505	\$9,387	\$5,613	63%
5424	Maint Radio	\$20,500	\$7,813	\$12	\$7,825	\$12,675	38%
5426	Maint Office Equip	\$10,640	\$1,831	\$639	\$2,470	\$8,170	23%
5428	Maint Structure	\$123,540	\$13,577	\$8,417	\$21,994	\$101,546	18%
5611	Other Insurance	\$187,743	\$0	\$198,359	\$198,359	(\$10,616)	106%
5612	Workers Comp	\$1,493,215	\$1,353,669		\$1,253,530	\$239,685	84%
5638	Utilities	\$138,842	\$24,636	\$10,959	\$35,595	\$103,247	26%
5639	Radio Dispatching	\$12,239	\$0	\$0	\$0	\$12,239	0%
5641	Telephone	\$118,288	\$14,395	\$7,702	\$22,097	\$96,191	19%
5722	Trans * Travel	\$1,500	\$495	\$350	\$845	\$655	56%
5731	Training*Education	\$221,767	\$7,831	\$4,191	\$12,021	\$209,746	5%
5732	Health & Wellness	\$100,000	\$2,952	\$13,332	\$16,284	\$83,716	16%
5733	Fire Prevention	\$576,886	\$94,258	\$56,077	-\$16,789	\$593,675	-3%
5734	Seminars*Conf*Class	\$11,000	\$0	\$1,399	\$1,399	\$9,601	13%
5876	Profess Services	\$205,098	\$26,252	\$2,340	\$28,724	\$176,374	14%
5878	GIS*Mapping	\$74,500	\$0	\$0	\$0	\$74,500	0%
5927	Program Act. Exp.	\$48,350	\$13,875	\$3,721	\$17,596	\$30,754	36%
5928	Emergency Operations	\$25,000	\$3,165	\$1,352	\$4,517	\$20,483	18%
5966	Dist Spec Exp.	\$45,630	\$26,205	\$814	\$27,020	\$18,610	59%
<b>ACCT#</b>	<b>SUB-TOTAL</b>	<b>\$4,703,546</b>	<b>\$1,759,300</b>	<b>\$395,030</b>	<b>\$1,886,642</b>	<b>\$2,816,904</b>	<b>40%</b>
7011	LTVV/CMD	\$0	\$0	\$50,567	-\$4,238	\$4,238	
7111	Land Expense		-\$233		-\$233	\$233	
7112	STA#7 Loan Pmt	\$953,200	\$3,296		\$3,296	\$949,904	
7211	Struct. Improvement	\$46,000	\$9,500	\$3,084	\$12,584	\$33,416	27%
7311	Equipment	\$295,250	\$308,448	\$88,821	\$392,765	(\$97,515)	133%
7410	Admin/808 Portola Rd	\$297,004	\$46,595	\$31,053	\$77,648	\$219,356	26%
7411	Human Resource	\$2,500	\$0	\$2,003	\$2,003	\$497	80%
<b>ACCT#</b>	<b>SUB-TOTAL</b>	<b>\$1,593,954</b>	<b>\$367,606</b>	<b>\$175,529</b>	<b>\$481,823</b>	<b>\$1,109,631</b>	<b>0%</b>
8811	Interim Station 7 (Reso)	\$1,000,000				\$1,000,000	0%
8612	Equip Reserves (Reso)	\$3,928,923				\$3,928,923	0%
8824	Retire/GASB Reserves (Reso)	\$3,643,572				\$3,643,572	
	<b>TOTAL</b>	<b>\$27,503,100</b>		<b>\$2,096,264</b>	<b>\$9,443,535</b>	<b>\$18,057,065</b>	<b>34%</b>

Woodside Fire QuickBooks  
 Account QuickReport  
 As of September 30, 2024

3:54 PM  
 10/08/2024  
 Cash Basis

Date	Num	Name	Memo	Paid Amount
0111 · 0111		Claim on Cash		
09/01/2024	CC-PAYMT	ELAVON MERCHANT SERVICES	MERCHANT #8039547107	-464.47
09/01/2024	24-08.03R		4321 · District Retirement	283,141.16
09/03/2024	1117	TROY TAUFER	REIMB SEPT2024 DISTRICT PREMIUM	-2,394.05
09/03/2024	1118	C A P F	AUG 20214	-1,563.50
09/03/2024	1119	HEALTH CARE DENTAL TRUST	GROUP #1862/0467DC2CA *Sept 2024	-14,476.40
09/03/2024	1120	STEFFORD		-17,446.80
09/03/2024	1121	VISION SERVICE PLAN	CLIENT ID: 12021396	-3,315.50
09/03/2024	ACH-FSA	ADP CARD SERVICES	INV #6927236	-518.58
09/04/2024	1122	A.M. YARD & TREE SERVICE		-2,400.00
09/04/2024	1123	ACC BUSINESS		-2,586.14
09/04/2024	1124	AMAZON CAPITAL SERVICE		-698.73
09/04/2024	1125	BOB ERICKSON	REIMB PALS	-180.00
09/04/2024	1126	BUS & EQUIPMENT REPAIR		-27,665.87
09/04/2024	1127	CROSS CONNECTIONS MOBILE COMMUNICATIONS		-635.65
09/04/2024	1128	FIRST RESPONDERS RESILIENCY INC.		-12,000.00
09/04/2024	1129	FUSION CLOUD SERVICES LLC	CUST#653272	-1,110.57
09/04/2024	1130	JARED ABBOTT	REIMB FIRE EMERGENCY SERVICE ADMIN CLASS	-845.00
09/04/2024	1131	JOHNSON CONTROLS		-3,084.46
09/04/2024	1132	METRO MOBILE COMMUNICATIONS		-383.09
09/04/2024	1133	NATIONAL HOSE TESTING SPECIALITIES INC		-476.40
09/04/2024	1134	NTA LIFE BUSINESS SERVICES GROUP	POLICY# NL-C00232572	-22.50
09/04/2024	1135	RAY O'LEARY	REIMB ACLS	-190.00
09/04/2024	1136	RICOH USA, INC	CUST#1542008-28558441USC	-490.44
09/04/2024	1137	RingCentral Inc.	CUSTOMER ID#472278048	-1,508.87
09/04/2024	1138	SCL		-10,067.95
09/04/2024	1139	SCOTT LORY		-250.00
09/04/2024	1140	SILICON VALLEY MECHANICAL INC		-4,998.00
09/04/2024	1141	STERICYCLE, INC	CUST#6020378	-439.01
09/04/2024	1142	Total Compensation Systems, Inc.		-2,340.00
09/04/2024	1143	W H DEMPSEY ENGINEERING, LLC		-22,425.00
09/04/2024	1144	WAGeworks, INC	CUST#3006675	-136.50
09/04/2024	ACH-FSA	ADP CARD SERVICES	INV #6929972	-5.00
09/04/2024	ACH-FSA	ADP CARD SERVICES	INV #6931848	-65.00
09/05/2024	EFT-DEBIT	CALPERS*HEALTH BENEFITS DIVISION	BUS UNIT:1800 * CUST ID: 4352055512	-186,700.24
09/05/2024	ACH-FSA	ADP CARD SERVICES	INV #6939675	-15.00
09/06/2024	ACH-FSA	ADP CARD SERVICES	INV #6952157	-1,258.09
09/09/2024	EFT-DEBIT	CALPERS	CALPERS ID:432055512 * INV #17644460	-1,750.00
09/09/2024	1145	NEWFRONT INSURANCE SERVICES, LLC	POLICY#VFNU-TR-0014313-03/000	-5,919.00
09/09/2024	ACH-FSA	ADP CARD SERVICES	INV #6954070	-1.10
09/10/2024	EFT-DEBIT	CALPERS*457 DEFERRED PROGRAM	SIP ID: 450188 * REC ID: 17123526	-23,739.60
09/10/2024	EFT-DEBIT	ING LIFE INSURANCE & ANNUITY CO	BILLING GROUP #VB2412 * P/R 09/15/2024	-7,304.81
09/10/2024	ACH-FSA	ADP CARD SERVICES	INV #6955942	-355.00
09/10/2024	ACH-FSA	ADP CARD SERVICES	INV #6958096	-64.50
09/11/2024	1146	APPLIGENT DOCUMENT SOLUTION		-175.00
09/11/2024	1147	ARBA	CUST#8524	-679.32
09/11/2024	1148	AT&T MOBILITY	ACCT#287303481618	-2,064.51
09/11/2024	1149	CALIFORNIA WATER SERVICE CO	CUST#2508116666	-43.91
09/11/2024	1150	CITY OF REDWOOD CITY*WATER		-496.00
09/11/2024	1151	ENGINEERED FIRE SYSTEMS, INC		-2,250.00
09/11/2024	1152	HEALTH CARE EMPLOYEES MEDICAL TRUST	GROUP #K-904 * CARRIER 602030-0005 OCT 2024	-2,224.95
09/11/2024	1153	MOBIUS FIT	AUG 2024	-1,125.00
09/11/2024	1154	N P F B A * LONG TERM CARE	OCT 2024 BILLING	-255.00
09/11/2024	1155	NEWFRONT INSURANCE SERVICES, LLC	POLICY#VFG5-TR-0001283-00/000, VFNU-CM-0014:	-192,439.52
09/11/2024	1156	RECOLOGY SAN MATEO COUNTY	ACCT #731698299	-284.91
09/11/2024	1157	RON RAMIES AUTOMOTIVE INC		-4,794.01
09/11/2024	1158	SAMBASAFETY	ACCT#M00007703	-182.83
09/11/2024	1159	TYPE-A-TECH		-1,677.41
09/12/2024	ACH-FSA	ADP CARD SERVICES	INV #6967966	-4.97
09/13/2024	P/R 08/24	ADP PAYROLL DEDUCTION	ADVICE OF DEBT #667526661	-457.50
09/13/2024	P/R AUG 24	ADP PAYROLL DEDUCTION	ADVICE OF DEBT #667525701	-942.40
09/13/2024	P/R 091524	ADP PAYROLL DEDUCTION	P/R 9/15/2024	-505,158.79
09/13/2024	ACH-FSA	ADP CARD SERVICES	INV #6970287	-358.88
09/16/2024	ACH-FSA	ADP CARD SERVICES	INV #6973245	-477.00
09/17/2024	ACH-FSA	ADP CARD SERVICES	INV #6974621	-1,396.00
09/18/2024	1160	AMANDA LEE		-1,745.00
09/18/2024	1161	CARLOS PEREZ		-3,525.00
09/18/2024	1162	DAVID JAAFE		-10,000.00
09/18/2024	1163	FRANCIS KOCH		-3,740.00
09/18/2024	1164	GREG VAN HAUSER		-1,200.00
09/18/2024	1165	JUNE THOMPSON		-800.00

Woodside Fire QuickBooks  
 Account QuickReport  
 As of September 30, 2024

3:54 PM  
 10/08/2024  
 Cash Basis

Date	Num	Name	Memo	Paid Amount
09/18/2024	1166	KIRBY AND BJORN CONRAD		-1,800.00
09/18/2024	1167	LINDA THURLOW		-3,831.82
09/18/2024	1168	MARIO WIJTMAN		-2,400.00
09/18/2024	1169	PETER BLUM		-5,000.00
09/18/2024	1170	PETER GOLDSCHIEDER		-275.00
09/18/2024	1171	RALPH AND RHONDA HYVER		-2,172.50
09/18/2024	1172	RHONDA LARSON		-1,775.00
09/18/2024	1173	ROSS EDWARDS		-1,760.00
09/18/2024	1174	SONIA MARTINEZ		-5,000.00
09/18/2024	1175	STUART YOUNG		-1,150.00
09/18/2024	1176	AMAZON CAPITAL SERVICE		-1,524.09
09/18/2024	1177	AMERICAN MESSAGING	ACCT#M7-118546	-12.40
09/18/2024	1178	AMERICAN PORTABLES		-253.28
09/18/2024	1179	ARC	Inv date 6/18/24	-2,102.30
09/18/2024	1180	BCN*BENEFITS COMMUNICATION NETWORK	MONTHLY SERVICE FEE	-110.00
09/18/2024	1181	BIN LIU	SEPT 24 CELL PHONE STIPEND	-160.00
09/18/2024	1182	CALIFORNIA WATER SERVICE CO	CUST#2508116666	-388.23
09/18/2024	1183	GUARDIAN	GROUP ID: 784897	-245.56
09/18/2024	1184	KNOX COMPANY		-3,798.59
09/18/2024	1185	LORI AREVALO	SEPT 24 CELL PHONE STIPEND	-160.00
09/18/2024	1186	MARSHALL HIRD		-55.01
09/18/2024	1187	NEW YORK LIFE	ACCT#XVZ	-1,373.92
09/18/2024	1188	PITNEY BOWES INC	ACCT#0011718411	-199.70
09/18/2024	1189	PORTOLA VALLEY HARDWARE		-188.84
09/18/2024	1190	VERIZON WIRELESS	ACCT#571769626-00003	-815.46
09/18/2024	1191	WITMER PUBLIC SAFETY GROUP, INC		-894.23
09/18/2024	ACH-FSA	ADP CARD SERVICES	INV #6984605	-24.43
09/19/2024	ACH-FSA	ADP CARD SERVICES	INV #6987573	-793.42
09/20/2024	ACH-FSA	ADP CARD SERVICES	INV #6988297	-508.34
09/23/2024	EFT-DEBIT	CALPERS*RETIREMENT	ID: 4352055512 * 08/01/24-08/31/24	-283,141.16
09/23/2024	EFT-DEBIT	CALPERS*RETIREMENT	ID: 4352055512 * M. Dagenais's adjustment	-11,911.43
09/23/2024	1192	U.S. BANK CORP PAYMENT SYSTEMS		-26,079.84
09/23/2024	ACH-FSA	ADP CARD SERVICES	INV #6991217	-1,720.42
09/25/2024	EFT-DEBIT	ING LIFE INSURANCE & ANNUITY CO	BILLING GROUP #VB2412 * P/R 09/30/2024	-7,304.81
09/25/2024	EFT-DEBIT	CALPERS*457 DEFERRED PROGRAM	SIP ID: 450188 * REC ID: 17123526	-23,739.60
09/25/2024	1193	ALL IN ONE BUILDING MAINTENANCE	SEPT 2024 MAINT	-585.00
09/25/2024	1194	AMANDA LEE	REIMB OCT 16 23 SUPPLIES FOR COMMUNITY MEETIN	-98.11
09/25/2024	1195	CALIFORNIA WATER SERVICE CO	CUST#2158666666	-698.26
09/25/2024	1196	CLARK PEST CONTROL	station #19	-173.00
09/25/2024	1197	FOUR STAR AUTOMOTIVE, INC	2000 PIERCE LANCE	-8,328.32
09/25/2024	1198	GRAY QUARTER, INC.		-5,736.90
09/25/2024	1199	L.N. CURTIS & SONS		-325.39
09/25/2024	1200	LEGAL SHIELD	GROUP #0024706	-205.35
09/25/2024	1201	MICHAEL WARD	REIMB METRO MOBILE COMMUNICATIONS BILLS	-2,192.43
09/25/2024	1202	MIKE AND LISA DOUGLAS	OCT RENT*MAINT EXP 808/ADMIN	-17,303.27
09/25/2024	1203	MOBILE CALIBRATION SERVICES, LLC		-591.25
09/25/2024	1204	PACIFIC GAS & ELECTRIC		-9,047.94
09/25/2024	1205	RICOH USA, INC	CUST#1542008-28558441USC	-148.94
09/25/2024	1206	Ricoh USA, Inc.	CUST#13738808	-35.11
09/25/2024	1207	SAN MATEO COUNTY FIREFIGHTERS L2400	SEPT 2024 UNION DUES	-6,347.00
09/25/2024	1208	SCL		-5,616.44
09/25/2024	1209	SILICON VALLEY MECHANICAL INC		-1,300.00
09/25/2024	1210	SMC INFORMATION SERVICES DEPARTMENT	AUG 2024	-356.52
09/25/2024	1211	THE GOODYEAR TIRE & RUBBER CO.	E119	-2,115.89
09/25/2024	1212	WFPD ENGINE CO 35	SEPT 2024 FUND CONTRIBUTIONS	-475.00
09/25/2024	1213	WFPD HOUSE FUND	SEPT 2024 FUND CONTRIBUTIONS	-1,290.00
09/25/2024	ACH-FSA	ADP CARD SERVICES	INV #7002580	-124.80
09/27/2024	ACH-FSA	ADP CARD SERVICES	INV #7021644	-94.26
09/30/2024	24-09.01		4321 · District Retirement	-289,912.07
09/30/2024	P/R 093024	ADP PAYROLL DEDUCTION	P/R 9/30/2024	-532,835.64
09/30/2024	ACH-FSA	ADP CARD SERVICES	INV #7023093	-10.00
		<b>TOTAL</b>		<b>-2,096,263.84</b>

Monthly Board of Directors  
Expense \* Revenue Report for FY 24-25

<i>10/21/2024</i>														
	in \$000's	31-Jul-24	31-Aug-24	30-Sep-24	30-Sep-24	31-Oct-24	30-Nov-24	31-Dec-24	31-Jan-25	28-Feb-25	31-Mar-25	30-Apr-25	31-May-25	30-Jun-25
		ACTUAL	ACTUAL	Estimated	ACTUAL	Estimated	Estimated	Estimated	Estimated	Estimated	Estimated	Estimated	Estimated	Estimated
Beg. Cash Balance		\$25,267	\$19,913	\$19,474	\$19,826	\$17,520	\$16,526	\$15,885	\$24,514	\$24,643	\$22,850	\$22,306	\$26,342	\$26,682
<b>EXPENSES:</b>														
Payroll		(\$905)	(\$954)	(\$961)	(\$934)	(\$961)	(\$961)	(\$961)	(\$961)	(\$961)	(\$961)	(\$963)	(\$963)	(\$962)
Overtime		(\$171)	(\$170)	(\$160)	(\$177)	(\$159)	(\$160)	(\$160)	(\$160)	(\$160)	(\$160)	(\$159)	(\$159)	(\$160)
Retirement		(\$172)	(\$170)	(\$184)	(\$188)	(\$184)	(\$184)	(\$184)	(\$184)	(\$184)	(\$184)	(\$184)	(\$183)	(\$184)
Monthly Expenses		(\$741)	(\$654)	(\$562)	(\$797)	(\$562)	(\$562)	(\$562)	(\$562)	(\$562)	(\$562)	(\$562)	(\$562)	(\$562)
SDRMA (WC Ins)		(\$1,363)		(\$131)										
Retirement*GASB														
New Engine														
Loan/Interest Payment						(\$222)						(\$727)		
Contingency Appropriations														
UAL Retirement * 115 Trust Account		(\$2,671)												
<b>Sub-Total</b>		<b>(\$6,023)</b>	<b>(\$1,948)</b>	<b>(\$1,998)</b>	<b>(\$2,096)</b>	<b>(\$2,088)</b>	<b>(\$1,867)</b>	<b>(\$1,867)</b>	<b>(\$1,867)</b>	<b>(\$1,867)</b>	<b>(\$1,867)</b>	<b>(\$2,595)</b>	<b>(\$1,867)</b>	<b>(\$1,868)</b>
<b>TOTAL EXPENSE</b>		<b>(\$6,023)</b>	<b>(\$1,948)</b>	<b>(\$1,998)</b>	<b>(\$2,096)</b>	<b>(\$2,088)</b>	<b>(\$1,867)</b>	<b>(\$1,867)</b>	<b>(\$1,867)</b>	<b>(\$1,867)</b>	<b>(\$1,867)</b>	<b>(\$2,595)</b>	<b>(\$1,867)</b>	<b>(\$1,868)</b>
<b>REVENUE:</b>														
1021 Property Tax Cur Sec							\$1,158	\$10,355	\$1,630		\$1,156	\$6,415	\$2,080	\$316
1031 Property Tax Cur Unsec						\$884					\$53			\$45
1033 Prior Yr. - Unsecured Tax														
1041 Property Tax SB813			\$3	\$20	\$4	\$22	\$45	\$57	\$120	\$49	\$95	\$42	\$85	\$70
1521 Interest Earned (Allocation)		\$322				\$155			\$155			\$155		
1831 Homeowners Property Tax Relief								\$9	\$21				\$22	\$10
2658 Misc Revenue-JPA-Cell Towers		\$88	\$61	\$24	\$53	\$33	\$23	\$76	\$70	\$25	\$20	\$19	\$20	\$70
1046 ERAF			\$1,572											
Reimbursements-Refunds, etc*														
*State Comp*House Fund*Empl*VOIDS			\$223		\$352									
Strike Team monies received														
Woodside Fire Foundation														
<b>TOTAL REVENUE</b>		\$410	\$1,859	\$44	\$409	\$1,094	\$1,226	\$10,497	\$1,996	\$74	\$1,324	\$6,631	\$2,207	\$511
Month End Adj		\$259	\$2		\$7									
<b>End Cash Balance/Total Reserves</b>		<b>\$19,913</b>	<b>\$19,826</b>	<b>\$17,520</b>	<b>\$18,146</b>	<b>\$16,526</b>	<b>\$15,885</b>	<b>\$24,514</b>	<b>\$24,643</b>	<b>\$22,850</b>	<b>\$22,306</b>	<b>\$26,342</b>	<b>\$26,682</b>	<b>\$25,324</b>
<b>GASB Postemployment Healthcare Cost</b>		<b>\$6,079</b>	<b>\$8,670</b>	<b>\$6,079</b>	<b>\$8,670</b>	<b>\$6,079</b>	<b>\$6,079</b>	<b>\$6,079</b>	<b>\$6,079</b>	<b>\$6,079</b>	<b>\$6,079</b>	<b>\$6,079</b>	<b>\$6,079</b>	<b>\$6,079</b>
<b>Employer Retirement Liability</b>		<b>\$38,228</b>	<b>\$38,228</b>	<b>\$38,228</b>	<b>\$38,228</b>	<b>\$38,228</b>	<b>\$38,228</b>	<b>\$38,228</b>	<b>\$38,228</b>	<b>\$38,228</b>	<b>\$38,228</b>	<b>\$38,228</b>	<b>\$38,228</b>	<b>\$38,228</b>
<b>Loan Balance</b>		<b>\$11,785</b>	<b>\$11,785</b>	<b>\$11,785</b>	<b>\$11,785</b>	<b>\$11,785</b>	<b>\$11,785</b>	<b>\$11,785</b>	<b>\$11,785</b>	<b>\$11,785</b>	<b>\$11,785</b>	<b>\$11,235</b>	<b>\$11,235</b>	<b>\$11,235</b>
Estimated Expenses		(\$5,901)	(\$1,866)	(\$1,998)	(\$1,998)	(\$2,088)	(\$1,867)	(\$1,867)	(\$1,867)	(\$1,867)	(\$1,867)	(\$2,595)	(\$1,867)	(\$1,868)
Actual Expenses		(\$6,023)	(\$1,948)		(\$2,096)									
Difference +/-		\$122	\$82	(\$1,998)	\$98	(\$2,088)	(\$1,867)	(\$1,867)	(\$1,867)	(\$1,867)	(\$1,867)	(\$2,595)	(\$1,867)	(\$1,868)
Estimated Revenue		\$342	\$1,632	\$154	\$154	\$1,094	\$1,226	\$10,497	\$1,996	\$74	\$1,324	\$6,631	\$2,207	\$511
Actual Revenue		\$410	\$1,859	\$183	\$409									
Difference +/-		\$68	\$227	\$29	\$255	(\$1,094)	(\$1,226)	(\$10,497)	(\$1,996)	(\$74)	(\$1,324)	(\$6,631)	(\$2,207)	(\$511)

## List view of all incidents (last month)

Basic Incident Alarm Date Time (FD1.26)	CAD2 Basic Incident Number	CAD Basic Incident Street Name	CAD2 Basic Incident City Name	Basic Incident Type (FD1.21)	Basic Incident Postal Code (FD1.19)
<b>Basic Incident City Name (FD1.16): ATN</b>					
09/04/2024 14:45:44	MF24-7303	SELBY	ATN	Cancelled en route, did not arrive on scene.	94027
<b>Basic Incident City Name (FD1.16): BRS</b>					
09/01/2024 14:23:47	DF24-1582	BAYSHORE	BRS	Cancelled en route, did not arrive on scene.	94005
<b>Basic Incident City Name (FD1.16): Emerald Lakes</b>					
09/01/2024 14:30:53	WF24-1456	ROCK CREEK	Emerald Lakes	False alarm or false call, other (FA)	94062
09/06/2024 07:14:51	DF24-1615	VISTA	Emerald Lakes	EMS call, excluding vehicle accident with injury (MED)	94062
09/06/2024 13:17:16	WF24-1486	MARIANI	Emerald Lakes	Cancelled en route, did not arrive on scene.	94062
09/08/2024 10:40:55	WF24-1498	TEMESCAL	Emerald Lakes	EMS call, excluding vehicle accident with injury (MED)	94062
09/08/2024 16:28:01	DF24-1637	OAK KNOLL	Emerald Lakes	EMS call, excluding vehicle accident with injury (MED)	94062
09/09/2024 11:27:05	WF24-1505	BAY VIEW	Emerald Lakes	(UTL) No incident found on arrival at dispatch address	94062
09/21/2024 13:49:48	WF24-1579	LOMBARDY	Emerald Lakes	EMS call, excluding vehicle accident with injury (MED)	94062
09/21/2024 18:12:59	WF24-1581	WILMINGTON	Emerald Lakes	Smoke Investigation - Not SLAC (SI)	94062
09/27/2024 23:29:34	RF24-10540	HAMILTON	Emerald Lakes	Smoke Investigation - Not SLAC (SI)	94062
<b>Basic Incident City Name (FD1.16): Kings Mountain</b>					
09/01/2024 17:03:15	WF24-1457	SKYLINE	Kings Mountain	EMS call, excluding vehicle accident with injury (MED)	94062
09/16/2024 16:40:25	DF24-1685	SILVER SKY	Kings Mountain	EMS call, excluding vehicle accident with injury (MED)	94062
09/29/2024 11:24:47	WF24-1629	SKYLINE	Kings Mountain	EMS call, Bicyclist Down (MED)	94062
09/29/2024 13:11:24	WF24-1630	KINGS MOUNTAIN	Kings Mountain	Cancelled en route, did not arrive on scene.	94062
<b>Basic Incident City Name (FD1.16): La Honda</b>					
09/03/2024 15:19:34	DF24-1607	LA HONDA	La Honda	MVA with injuries (TA)	94020
09/03/2024 17:19:46	DF24-1608	LA HONDA	La Honda	Motor vehicle accident with no injuries. involving Bicyclist	94020
09/07/2024 18:03:33	DF24-1632	PESCADERO CREEK	La Honda	Cancelled en route, did not arrive on scene.	94020
09/07/2024 21:01:11	DF24-1635	LA HONDA	La Honda	Cancelled en route, did not arrive on scene.	94020
<b>Basic Incident City Name (FD1.16): LAD</b>					
09/02/2024 12:55:05	WF24-1459	DEDALERA	LAD	(UTL) No incident found on arrival at dispatch address	94028
09/06/2024 21:50:39	WF24-1491	DEDALERA	LAD	Cancelled en route, did not arrive on scene.	94028
09/11/2024 15:54:16	WF24-1516	LA CUESTA	LAD	Wires Down, Power line down (WDOWN)	94028
09/14/2024 12:05:57	WF24-1530	ERICA	LAD	EMS call, excluding vehicle accident with injury (MED)	94028
09/15/2024 22:12:17	WF24-1535	LA MESA	LAD	EMS call, excluding vehicle accident with injury (MED)	94028
09/16/2024 19:34:04	WF24-1540	BALSAMINA	LAD	EMS call, excluding vehicle accident with injury (MED)	94028
09/17/2024 12:31:24	WF24-1546	LA CUESTA	LAD	EMS call, excluding vehicle accident with injury (MED)	94028
09/17/2024 19:28:42	WF24-1549	LA CUESTA	LAD	Cancelled en route, did not arrive on scene.	94028
09/20/2024 10:53:14	WF24-1567	ALPINE	LAD	Tree Down (TDOWN)	94028
09/24/2024 19:32:35	WF24-1595	BALSAMINA	LAD	Cancelled en route, did not arrive on scene.	94028
09/30/2024 17:25:19	WF24-1635	BALSAMINA	LAD	EMS call, excluding vehicle accident with injury (MED)	94028
<b>Basic Incident City Name (FD1.16): Loma Mar</b>					
09/07/2024 11:30:41	DF24-1625	MEMORIAL PARK	Loma Mar	Cancelled en route, did not arrive on scene.	94021
<b>Basic Incident City Name (FD1.16): LTW</b>					
09/14/2024 09:51:14	WF24-1529	LOS TRANCOS	LTW	EMS call, excluding vehicle accident with injury (MED)	94028
09/20/2024 11:29:49	WF24-1569	LOS TRANCOS	LTW	Public service, excluding Lift Assist (see 554) (PA)	94028

Basic Incident Alarm Date Time (FD1.26)	CAD2 Basic Incident Number	CAD Basic Incident Street Name	CAD2 Basic Incident City Name	Basic Incident Type (FD1.21)	Basic Incident Postal Code (FD1.19)
09/25/2024 17:58:27	WF24-1601	JOAQUIN	LTW	Odor of Gas, gas scare (HMI)	94028
09/27/2024 13:39:19	WF24-1614	LOS TRANCOS	LTW	EMS call, excluding vehicle accident with injury (MED)	94028
<b>Basic Incident City Name (FD1.16): Menlo Park</b>					
09/05/2024 10:21:13	MF24-7324	ROBLE	Menlo Park	Cancelled en route, did not arrive on scene.	94025
09/06/2024 11:27:29	MF24-7364	SAND HILL	Menlo Park	False Alarm - Alarm Sounding (FA)	94025
09/07/2024 14:44:35	DF24-1628	ALPINE	Menlo Park	MVA with injuries (TA)	94025
09/15/2024 08:59:59	DF24-1674	ALPINE	Menlo Park	MVA with injuries Involving Bicyclist (MED)	94028
09/18/2024 17:15:06	WF24-1553	SAND HILL	Menlo Park	Motor vehicle accident with no injuries. (TA)	94025
09/19/2024 09:00:24	WF24-1558	SAND HILL	Menlo Park	Smoke Investigation - Not SLAC (SI)	94025
09/24/2024 12:55:35	MF24-7938	SHARON PARK	Menlo Park	Smoke Investigation - Not SLAC (SI)	94025
<b>Basic Incident City Name (FD1.16): New Washoe City</b>					
09/08/2024 00:07:28	FM24-160	DAVIS FIRE, NEVADA COUNTY, NV		Vegetation Fire (VF)	89701
<b>Basic Incident City Name (FD1.16): OC</b>					
09/13/2024 10:15:45	FM24-180	AIRPORT FIRE, ORANGE COUNTY	OC	Vegetation Fire (VF)	90663
<b>Basic Incident City Name (FD1.16): PA</b>					
09/05/2024 02:59:36	FM24-152	NB 280	PA	Cancelled en route, did not arrive on scene.	94028
<b>Basic Incident City Name (FD1.16): Palomar Park</b>					
09/25/2024 02:52:23	DF24-1748	PALOMAR	Palomar Park	Outside equipment fire	94062
<b>Basic Incident City Name (FD1.16): Portola Valley</b>					
09/01/2024 05:45:08	WF24-1451	POSSUM	Portola Valley	False Alarm - Smoke detector activation (Dust, Construction, etc..) (FAS)	94028
09/02/2024 15:10:06	WF24-1460	GAMBETTA	Portola Valley	EMS call, excluding vehicle accident with injury (MED)	94028
09/02/2024 17:35:39	WF24-1461	PORTOLA	Portola Valley	EMS call, excluding vehicle accident with injury (MED)	94028
09/03/2024 11:41:55	WF24-1467	GROVE	Portola Valley	Wires Down, Power line down (WDOWN)	94028
09/03/2024 14:43:29	WF24-1468	RUSSELL	Portola Valley	Medical assist, assist EMS crew with manpower for lift assistance (MED)	94028
09/04/2024 10:11:56	WF24-1473	RUSSELL	Portola Valley	EMS call, excluding vehicle accident with injury (MED)	94028
09/04/2024 21:50:56	WF24-1474	GOLDEN HILLS	Portola Valley	False Alarm - Unintentional (Accidental) Alarm system activation, no fire (FA)	94028
09/05/2024 07:07:45	WF24-1477	PORTOLA	Portola Valley	EMS call, excluding vehicle accident with injury (MED)	94028
09/05/2024 09:59:13	WF24-1478	PORTOLA	Portola Valley	EMS call, excluding vehicle accident with injury (MED)	94028
09/05/2024 19:42:37	WF24-1484	CANYON	Portola Valley	EMS call, excluding vehicle accident with injury (MED)	94028
09/06/2024 07:53:44	WF24-1485	PORTOLA	Portola Valley	EMS call, excluding vehicle accident with injury (MED)	94028
09/06/2024 18:05:33	WF24-1489	CORTE MADERA	Portola Valley	Smoke or odor removal	94028
09/07/2024 01:59:26	WF24-1493	PORTOLA	Portola Valley	MVA with injuries (TA)	94028
09/09/2024 18:42:06	WF24-1507	ALPINE	Portola Valley	EMS call, excluding vehicle accident with injury (MED)	94028
09/11/2024 07:27:47	WF24-1511	PORTOLA	Portola Valley	EMS call, excluding vehicle accident with injury (MED)	94028
09/11/2024 09:21:14	WF24-1513	PORTOLA	Portola Valley	EMS call, excluding vehicle accident with injury (MED)	94028
09/11/2024 12:07:38	WF24-1514	PORTOLA	Portola Valley	EMS call, excluding vehicle accident with injury (MED)	94028
09/11/2024 12:49:01	WF24-1515	VALLEY OAK	Portola Valley	Public service, excluding Lift Assist (see 554) (PA)	94028
09/12/2024 18:34:48	WF24-1520	WYNDHAM	Portola Valley	EMS call, excluding vehicle accident with injury (MED)	94028
09/15/2024 12:51:54	WF24-1531	PORTOLA	Portola Valley	EMS call, excluding vehicle accident with injury (MED)	94028

Basic Incident Alarm Date Time (FD1.26)	CAD2 Basic Incident Number	CAD Basic Incident Street Name	CAD2 Basic Incident City Name	Basic Incident Type (FD1.21)	Basic Incident Postal Code (FD1.19)
09/16/2024 10:40:08	WF24-1538	PORTOLA	Portola Valley	EMS call, excluding vehicle accident with injury (MED)	94028
09/16/2024 11:38:40	WF24-1539	PORTOLA	Portola Valley	EMS call, excluding vehicle accident with injury (MED)	94028
09/17/2024 15:42:30	WF24-1547	PORTOLA	Portola Valley	EMS call, excluding vehicle accident with injury (MED)	94028
09/18/2024 19:48:51	WF24-1555	CORTE MADERA	Portola Valley	EMS call, excluding vehicle accident with injury (MED)	94028
09/19/2024 17:00:48	WF24-1564	SANTA MARIA	Portola Valley	Wires Down, Power line down (WDOWN)	94028
09/20/2024 11:05:58	WF24-1568	ZAPATA	Portola Valley	Gas leak (natural gas or LPG)	94028
09/20/2024 12:03:05	WF24-1570	PORTOLA	Portola Valley	EMS call, excluding vehicle accident with injury (MED)	94028
09/20/2024 22:08:20	WF24-1574	FREMONTIA	Portola Valley	Lift Assist, no medical merit	94028
09/21/2024 04:38:24	WF24-1576	PORTOLA	Portola Valley	EMS call, excluding vehicle accident with injury (MED)	94028
09/21/2024 09:41:38	WF24-1577	ALPINE	Portola Valley	EMS call, excluding vehicle accident with injury (MED)	94028
09/21/2024 11:05:32	WF24-1578	PORTOLA	Portola Valley	EMS call, excluding vehicle accident with injury (MED)	94028
09/22/2024 07:36:27	WF24-1582	BEAR PAW	Portola Valley	EMS call, excluding vehicle accident with injury (MED)	94028
09/22/2024 16:25:51	WF24-1585	SHAWNEE	Portola Valley	False Alarm - Smoke detector activation (Dust, Construction, etc..) (FAS)	94028
09/22/2024 22:50:27	WF24-1587	PORTOLA	Portola Valley	EMS call, excluding vehicle accident with injury (MED)	94028
09/23/2024 10:17:49	WF24-1588	WAYSIDE	Portola Valley	EMS call, excluding vehicle accident with injury (MED)	94028
09/23/2024 23:38:10	WF24-1590	QUAIL	Portola Valley	EMS call, excluding vehicle accident with injury (MED)	94028
09/24/2024 08:53:07	WF24-1592	PORTOLA	Portola Valley	EMS call, excluding vehicle accident with injury (MED)	94028
09/24/2024 16:03:33	WF24-1593	PORTOLA	Portola Valley	EMS call, excluding vehicle accident with injury (MED)	94028
09/25/2024 11:37:04	WF24-1596	WESTRIDGE	Portola Valley	MVA with injuries (TA)	94028
09/25/2024 22:32:11	WF24-1602	GOLDEN OAK	Portola Valley	Cancelled en route, did not arrive on scene.	94028
09/26/2024 15:21:40	WF24-1608	PORTOLA	Portola Valley	EMS call, excluding vehicle accident with injury (MED)	94028
09/27/2024 02:07:29	WF24-1609	PORTOLA	Portola Valley	EMS call, excluding vehicle accident with injury (MED)	94028
09/27/2024 12:25:40	WF24-1612	WESTRIDGE	Portola Valley	EMS call, Bicyclist Down (MED)	94028
09/27/2024 14:40:47	WF24-1615	PORTOLA	Portola Valley	EMS call, excluding vehicle accident with injury (MED)	94028
09/27/2024 18:52:00	WF24-1616	BROOKSIDE	Portola Valley	EMS call, excluding vehicle accident with injury (MED)	94028
09/28/2024 07:50:05	WF24-1618	GOLDEN OAK	Portola Valley	False Alarm - Smoke detector activation (Dust, Construction, etc..) (FAS)	94028
09/28/2024 10:03:23	WF24-1620	PORTOLA	Portola Valley	EMS call, excluding vehicle accident with injury (MED)	94028
09/28/2024 12:20:10	WF24-1623	PORTOLA	Portola Valley	EMS call, excluding vehicle accident with injury (MED)	94028
09/28/2024 19:56:59	WF24-1625	WYNDHAM	Portola Valley	EMS call, excluding vehicle accident with injury (MED)	94028
09/29/2024 08:06:15	WF24-1627	PORTOLA	Portola Valley	EMS call, excluding vehicle accident with injury (MED)	94028
09/30/2024 08:06:58	WF24-1632	SANDSTONE	Portola Valley	EMS call, excluding vehicle accident with injury (MED)	94028
09/30/2024 22:10:11	WF24-1637	ALPINE	Portola Valley	EMS call, excluding vehicle accident with injury (MED)	94028
<b>Basic Incident City Name (FD1.16): Redwood City</b>					
09/02/2024 14:36:18	RF24-9541	WOODSIDE	Redwood City	MVA vs pedestrian with injuries (TA)	94061
09/05/2024 09:06:10	RF24-9655	BRADFORD	Redwood City	Cancelled en route, did not arrive on scene.	94063
09/06/2024 14:26:52	RF24-9706	INDUSTRIAL	Redwood City	Cancelled en route, did not arrive on scene.	94063



Basic Incident Alarm Date Time (FD1.26)	CAD2 Basic Incident Number	CAD Basic Incident Street Name	CAD2 Basic Incident City Name	Basic Incident Type (FD1.21)	Basic Incident Postal Code (FD1.19)
09/07/2024 11:26:17	RF24-9741	JEFFERSON	Redwood City	EMS call, excluding vehicle accident with injury (MED)	94062
09/07/2024 14:23:16	RF24-9748	PLEASANT HILL	Redwood City	Fire, other (FIRE)	94061
09/08/2024 17:00:15	RF24-9778	EMERALD HILL	Redwood City	Cancelled en route, did not arrive on scene.	94061
09/11/2024 17:56:43	RF24-9902	EMERALD HILL	Redwood City	Cancelled en route, did not arrive on scene.	94062
09/13/2024 22:14:35	WF24-1528	COLTON	Redwood City	EMS call, excluding vehicle accident with injury (MED)	94062
09/16/2024 10:07:08	RF24-10067	VALOTA	Redwood City	Cancelled en route, did not arrive on scene.	94061
09/18/2024 09:16:28	RF24-10139	LOWELL	Redwood City	Cancelled en route, did not arrive on scene.	94062
09/20/2024 22:42:09	RF24-10235	ARGUELLO	Redwood City	Building fire (SF)	94063
09/21/2024 15:19:21	RF24-10263	WOODHILL	Redwood City	EMS call, excluding vehicle accident with injury (MED)	94061
09/24/2024 11:46:16	RF24-10384	POPLAR	Redwood City	Building fire (SF)	94061
09/25/2024 14:44:09	RF24-10447	EL CAMINO REAL	Redwood City	EMS call, excluding vehicle accident with injury (MED)	94061
09/27/2024 10:54:18	RF24-10515	JEFFERSON	Redwood City	EMS call, excluding vehicle accident with injury (MED)	94062
<b>Basic Incident City Name (FD1.16): San Bruno</b>					
09/08/2024 21:47:20	BF24-3068	3RD	San Bruno	Vegetation Fire (VF)	94066
<b>Basic Incident City Name (FD1.16): Skylonda</b>					
09/01/2024 18:10:44	DF24-1588	LA HONDA	Skylonda	Cancelled en route, did not arrive on scene.	94062
09/06/2024 23:24:18	WF24-1492	OLD LA HONDA	Skylonda	MVA with injuries (TA)	94062
09/07/2024 14:06:29	WF24-1494	SKYLINE	Skylonda	Public service, excluding Lift Assist (see 554) (PA)	94062
09/22/2024 11:58:15	DF24-1719	LA HONDA	Skylonda	Cancelled en route, did not arrive on scene.	94062
<b>Basic Incident City Name (FD1.16): SNC</b>					
09/18/2024 14:43:00	RF24-10158	OLD COUNTY	SNC	MVA with injuries (TA)	94070
<b>Basic Incident City Name (FD1.16): Town of Portola Valley</b>					
09/17/2024 10:02:00	WF24-1541	ALPINE	LAD	EMS call, Bicyclist Down (MED)	94028
09/17/2024 10:25:00	WF24-1542	ERICA	LAD	EMS call, excluding vehicle accident with injury (MED)	94028
<b>Basic Incident City Name (FD1.16): Town of Woodside</b>					
09/13/2024 12:53:59	WF24-1525	WOODSIDE	Woodside	Rescue or EMS standby	94062
<b>Basic Incident City Name (FD1.16): Unincorporated South of 92</b>					
09/01/2024 14:49:23	DF24-1584	SKYLINE	Unincorporated South of 92	MVA with injuries (TA)	95033
09/01/2024 21:19:59	DF24-1591	COGGINS	Unincorporated South of 92	EMS call, excluding vehicle accident with injury (MED)	94020
09/02/2024 12:39:23	DF24-1594	SKYLINE	Unincorporated South of 92	Cancelled en route, did not arrive on scene.	95033
09/03/2024 09:37:01	WF24-1464	SB 280	Unincorporated South of 92	(UTL) No incident found on arrival at dispatch address	94062
09/08/2024 17:57:37	DF24-1638	SKYLINE	Unincorporated South of 92	Cancelled en route, did not arrive on scene.	94020
09/12/2024 11:30:35	DF24-1653	ALPINE	Unincorporated South of 92	Cancelled en route, did not arrive on scene.	94020
09/29/2024 11:55:57	DF24-1772	SHINGLE MILL	Unincorporated South of 92	Cancelled en route, did not arrive on scene.	94020
<b>Basic Incident City Name (FD1.16): Woodside</b>					
09/01/2024 07:17:06	WF24-1452	PARTITION	Woodside	EMS call, excluding vehicle accident with injury (MED)	94062
09/01/2024 12:40:06	WF24-1454	MOUNTAIN HOME	Woodside	(UTL) No incident found on arrival at dispatch address	94062
09/01/2024 12:55:08	WF24-1455	PARTITION	Woodside	Medical assist, assist EMS crew with manpower for lift assistance (MED)	94062
09/02/2024 09:34:24	WF24-1458	PORTOLA	Woodside	EMS call, Bicyclist Down (MED)	94062
09/02/2024 18:16:08	WF24-1462	SKYLINE	Woodside	Tree Down (TDOWN)	94062
09/02/2024 19:59:10	WF24-1463	LAS PULGAS	Woodside	EMS call, excluding vehicle accident with injury (MED)	94062

Basic Incident Alarm Date Time (FD1.26)	CAD2 Basic Incident Number	CAD Basic Incident Street Name	CAD2 Basic Incident City Name	Basic Incident Type (FD1.21)	Basic Incident Postal Code (FD1.19)
09/03/2024 09:41:07	WF24-1465	WOODSIDE	Woodside	EMS call, excluding vehicle accident with injury (MED)	94062
09/03/2024 10:49:40	WF24-1466	CANADA	Woodside	EMS call, excluding vehicle accident with injury (MED)	94062
09/03/2024 18:05:03	WF24-1470	PORTOLA	Woodside	False Alarm - Unintentional (Accidental) Alarm system activation, no fire (FA)	94062
09/03/2024 18:52:55	WF24-1471	PORTOLA	Woodside	False Alarm - Unintentional (Accidental) Alarm system activation, no fire (FA)	94062
09/04/2024 23:14:09	WF24-1476	PATROL	Woodside	EMS call, excluding vehicle accident with injury (MED)	94062
09/05/2024 12:22:04	WF24-1479	WOODSIDE	Woodside	EMS call, excluding vehicle accident with injury (MED)	94062
09/05/2024 12:36:50	WF24-1480	FARM HILL	Woodside	Motor vehicle accident with no injuries. (TA)	94062
09/05/2024 12:46:05	WF24-1481	FARM HILL	Woodside	Public service, excluding Lift Assist (see 554) (PA)	94061
09/05/2024 14:01:40	WF24-1482	MAPLE	Woodside	EMS call, excluding vehicle accident with injury (MED)	94062
09/05/2024 18:22:23	WF24-1483	WOODSIDE	Woodside	EMS call, excluding vehicle accident with injury (MED)	94062
09/06/2024 17:32:40	WF24-1487	WOODSIDE	Woodside	Motor vehicle accident with no injuries. (TA)	94062
09/06/2024 17:43:51	WF24-1488	PORTOLA	Woodside	Cancelled en route, did not arrive on scene.	94062
09/06/2024 20:07:26	WF24-1490	WOODSIDE	Woodside	False Alarm - Smoke detector activation due to malfunction (FAS)	94062
09/07/2024 15:57:16	WF24-1495	WHISKEY HILL	Woodside	EMS call, excluding vehicle accident with injury (MED)	94062
09/07/2024 17:41:25	WF24-1496	WOODSIDE	Woodside	EMS call, excluding vehicle accident with injury (MED)	94062
09/08/2024 09:51:43	WF24-1497	PORTOLA	Woodside	EMS call, Bicyclist Down (MED)	94062
09/08/2024 14:08:04	WF24-1499	MISSION TRAIL	Woodside	EMS call, excluding vehicle accident with injury (MED)	94062
09/08/2024 16:45:08	WF24-1500	LA HONDA	Woodside	(UTL) No incident found on arrival at dispatch address	94062
09/08/2024 20:23:46	WF24-1502	WOODSIDE	Woodside	EMS call, excluding vehicle accident with injury (MED)	94062
09/09/2024 01:16:11	WF24-1503	WOODSIDE	Woodside	Tree Down (TDOWN)	94062
09/09/2024 15:08:02	WF24-1506	OAKHILL	Woodside	EMS call, excluding vehicle accident with injury (MED)	94062
09/10/2024 09:40:21	WF24-1508	MISSION TRAIL	Woodside	False Alarm - Unintentional (Accidental) Alarm system activation, no fire (FA)	94062
09/10/2024 19:10:22	WF24-1509	WOODSIDE	Woodside	MVA with injuries (TA)	94062
09/10/2024 22:37:41	WF24-1510	WOODSIDE	Woodside	(UTL) No incident found on arrival at dispatch address	94062
09/11/2024 08:47:17	WF24-1512	OLIVE HILL	Woodside	False Alarm - Unintentional (Accidental) Alarm system activation, no fire (FA)	94062
09/12/2024 01:14:40	WF24-1517	WOODSIDE	Woodside	False Alarm - Unintentional (Accidental) Alarm system activation, no fire (FA)	94062
09/12/2024 07:26:45	WF24-1518	MANZANITA	Woodside	EMS call, excluding vehicle accident with injury (MED)	94062
09/12/2024 17:14:59	WF24-1519	FARM HILL	Woodside	EMS call, excluding vehicle accident with injury (MED)	94061
09/12/2024 23:49:35	WF24-1521	PHILLIP	Woodside	Lift Assist, no medical merit	94062
09/13/2024 03:09:07	WF24-1522	MARTINEZ	Woodside	False Alarm - Unintentional (Accidental) Alarm system activation, no fire (FA)	94062
09/13/2024 08:21:52	WF24-1523	RANCH	Woodside	Odor of Gas, gas scare (HMI)	94062
09/13/2024 10:46:33	WF24-1524	BEAR GULCH	Woodside	Oil or other combustible liquid spill	94062
09/13/2024 20:18:09	WF24-1527	TRIPP	Woodside	EMS call, excluding vehicle accident with injury (MED)	94062
09/15/2024 16:10:15	WF24-1532	NB 280	Woodside	Motor vehicle accident with no injuries. (TA)	94062
09/15/2024 19:32:57	WF24-1533	WOODSIDE	Woodside	EMS call, excluding vehicle accident with injury (MED)	94062
09/15/2024 20:07:34	WF24-1534	RUNNYMEDE	Woodside	Tree Down (TDOWN)	94062

Basic Incident Alarm Date Time (FD1.26)	CAD2 Basic Incident Number	CAD Basic Incident Street Name	CAD2 Basic Incident City Name	Basic Incident Type (FD1.21)	Basic Incident Postal Code (FD1.19)
09/15/2024 23:39:18	WF24-1536	LA HONDA	Woodside	(UTL) No incident found on arrival at dispatch address	94062
09/16/2024 08:47:58	WF24-1537	SB 280	Woodside	MVA with injuries (TA)	94062
09/17/2024 10:33:44	WF24-1544	NB 280	Woodside	Overheated motor (not a vehicle engine)	94062
09/17/2024 18:24:58	WF24-1548	FARM HILL	Woodside	EMS call, excluding vehicle accident with injury (MED)	94061
09/18/2024 09:44:10	WF24-1550	WOODSIDE	Woodside	Wires Down, Power line down (WDOWN)	94062
09/18/2024 15:04:09	WF24-1552	GRANDVIEW	Woodside	False Alarm - CO detector activation, no CO (FACM)	94062
09/18/2024 19:23:09	WF24-1554	ALBION	Woodside	EMS call, excluding vehicle accident with injury (MED)	94062
09/18/2024 19:52:44	WF24-1556	LAS PULGAS	Woodside	False Alarm - Alarm Sounding (FA)	94062
09/19/2024 00:04:00	WF24-1557	VALLEY	Woodside	False Alarm - Smoke detector activation due to malfunction (FAS)	94027
09/19/2024 14:20:06	WF24-1560	FARM HILL	Woodside	Car Fire - Passenger vehicle fire , not a motorhome	94061
09/19/2024 17:19:45	WF24-1565	LA HONDA	Woodside	EMS call, excluding vehicle accident with injury (MED)	94062
09/19/2024 20:34:03	WF24-1566	GODETIA	Woodside	EMS call, excluding vehicle accident with injury (MED)	94062
09/20/2024 14:58:51	WF24-1571	ESPINOSA	Woodside	EMS call, excluding vehicle accident with injury (MED)	94062
09/20/2024 16:11:05	WF24-1572	MAPLE	Woodside	EMS call, excluding vehicle accident with injury (MED)	94062
09/20/2024 19:32:55	WF24-1573	ESPINOSA	Woodside	Cancelled en route, did not arrive on scene.	94062
09/21/2024 04:37:00	WF24-1575	JEFFERSON	Woodside	(UTL) No incident found on arrival at dispatch address	94062
09/21/2024 17:31:00	WF24-1580	SB 280	Woodside	Cancelled en route, did not arrive on scene.	94062
09/22/2024 15:10:55	WF24-1583	WOODSIDE	Woodside	Cancelled en route, did not arrive on scene.	94062
09/22/2024 15:21:25	WF24-1584	WOODSIDE	Woodside	EMS call, excluding vehicle accident with injury (MED)	94062
09/24/2024 18:54:24	WF24-1594	MISSION TRAIL	Woodside	EMS call, excluding vehicle accident with injury (MED)	94062
09/25/2024 14:00:03	WF24-1598	SB 280	Woodside	EMS call, excluding vehicle accident with injury (MED)	94062
09/25/2024 15:20:04	WF24-1599	GRANDVIEW	Woodside	EMS call, excluding vehicle accident with injury (MED)	94062
09/25/2024 17:56:47	WF24-1600	JEFFERSON	Woodside	EMS call, excluding vehicle accident with injury (MED)	94062
09/25/2024 23:06:34	WF24-1603	LA HONDA	Woodside	Motor vehicle accident with no injuries. (TA)	94062
09/26/2024 06:51:45	WF24-1604	MOUNTAIN HOME	Woodside	Steam, vapor, fog or dust thought to be smoke	94062
09/26/2024 15:03:56	WF24-1606	BEAR GULCH	Woodside	Wires Down, Power line down (WDOWN)	94062
09/26/2024 15:21:05	WF24-1607	WOODSIDE	Woodside	EMS call, excluding vehicle accident with injury (MED)	94062
09/27/2024 03:23:06	WF24-1610	OLD LA HONDA	Woodside	EMS call, excluding vehicle accident with injury (MED)	94062
09/27/2024 10:36:02	WF24-1611	LAS PULGAS	Woodside	Flooding Conditions mitigation (Water Vac, Pump, Etc...) (PAW)	94062
09/27/2024 12:37:30	WF24-1613	QUAIL MEADOWS	Woodside	EMS call, Bicyclist Down (MED)	94062
09/27/2024 21:05:46	WF24-1617	NB 280	Woodside	Motor vehicle accident with no injuries. (TA)	94062
09/28/2024 10:34:44	WF24-1622	CREST	Woodside	EMS call, excluding vehicle accident with injury (MED)	94062
09/28/2024 15:00:46	WF24-1624	SKYLINE	Woodside	EMS call, excluding vehicle accident with injury (MED)	94062
09/28/2024 21:48:07	WF24-1626	WOODSIDE	Woodside	MVA with injuries (TA)	94062
09/29/2024 09:51:34	WF24-1628	WOODSIDE	Woodside	EMS call, excluding vehicle accident with injury (MED)	94062
09/30/2024 07:02:22	WF24-1631	FARM HILL	Woodside	False Alarm - Smoke detector activation (Dust, Construction, etc..) (FAS)	94061
09/30/2024 15:05:20	WF24-1634	SB 280	Woodside	Motor vehicle accident with no injuries. (TA)	94062

Basic Incident Alarm Date Time (FD1.26)	CAD2 Basic Incident Number	CAD Basic Incident Street Name	CAD2 Basic Incident City Name	Basic Incident Type (FD1.21)	Basic Incident Postal Code (FD1.19)
09/30/2024 17:54:11	WF24-1636	WOODSIDE	Woodside	EMS call, excluding vehicle accident with injury (MED)	94062
<b>Basic Incident City Name (FD1.16): WSB</b>					
09/22/2024 19:24:05	WF24-1586	CHURCHILL	WSB	Public service, excluding Lift Assist (see 554) (PA)	94062
09/26/2024 10:26:20	WF24-1605	CHURCHILL	WSB	Cancelled en route, did not arrive on scene.	94062

**Report Criteria**

Basic Incident City Name (Fd1.16): Is Not Blank Ladera|Portola Valley|Skylonda|Town of Portola Valley|Town of Woodside|Woodside

Cad2 Basic Incident Date: Is Equal To Last Month

**Description**

This report displays a list view of all incidents and their corresponding area within WFPD



# Woodside Fire Protection District

808 Portola Road Portola Valley, Ca. 94028

(650) 851-1594

[www.woodsidefire.org](http://www.woodsidefire.org)

Tom Cuschieri – Fire Chief

---

## BOARD MEETING AGENDA SUBMITTAL

**Date: October 23rd, 2024**

**To: Woodside Fire Protection District Board of Directors**

**From: Tom Cuschieri – Fire Chief**

**Re: Agenda Item R1. Adoption of a Resolution Establishing an Account with the California CLASS Joint Powers Authority Investment Program**

---

### **RECOMMENDED ACTION:**

Staff recommends the following action:

Approval of Resolution 24-15 (1) establishing an Account with the California CLASS Joint Powers Authority Investment Program, (2) authorizing the Fire Chief and Finance Manager to order the deposit or withdrawal of District monies in the Account and execute and deliver any necessary or advisable documents as stated in the resolution, and (3) establishing that District funding in the account will not exceed \$10 million dollars.

### **BACKGROUND:**

Current Fire District Funds are invested in the San Mateo County (SMCO) Investment Pool Fund. These estimated earnings for FY 2024-2025 is 3.85%.

Staff met with California CLASS Investment Services Director, Crystal Lynn for an overview of California Cooperative Liquid Assets Securities System. Staff has come to the conclusion that it would be in the District's best interest to establish an account with the CA Class Investment Pool as the current return rate is at 4.98%, whereas SMCO is at 3.85%.

As noted in the California CLASS Participation List many governmental organizations are utilizing this program including Special Districts. Staff has reached out to other participating agencies for feed back and has had positive results.

At this time, staff is recommending that the Board authorize the creation of an investment account with the CA Class Investment Program to allow more investment opportunities for District funds.

### **FINANCIAL IMPACT:**

Potential for increased interest earned on invested funds.

### **ATTACHMENTS**

1. CA Class Handouts
2. CA Class Joint Exercise of Powers Agreement
3. Resolution 24-14

## What is California CLASS?

California Cooperative Liquid Assets Securities System (California CLASS) is a joint exercise of powers entity authorized under Section 6509.7, California Government Code. California CLASS is a pooled investment option that was created via a joint exercise of powers agreement by and among California public agencies. California CLASS offers public agencies a convenient method for investing in highly liquid, investment-grade securities carefully selected with the goal of optimizing yields while prioritizing safety and liquidity. The California CLASS Prime and Enhanced Cash funds help assist public agencies in strengthening and diversifying their cash management programs in accordance with the safety, liquidity, and yield hierarchy that provides the framework for the investment of public funds.

## How is it governed and managed?

California CLASS is overseen and governed by a Board of Trustees. The Board is made up of public agency finance professionals who participate in California CLASS and are members of the Joint Powers Authority (JPA). The Board of Trustees has entered into an Investment Advisor and Administrator Agreement with Public Trust Advisors, LLC. Public Trust is responsible to the Board for all program investment and administrative activities as well as many of the services provided on behalf of the Participants.

## How can we participate?

Enrolling in California CLASS is simple. Public agencies may become Participants simply by filling out the Participant Registration Form that can be found in the document center on the California CLASS website. Public agencies may submit the completed registration packet to California CLASS Client Services for processing at [clientservices@californiaclass.com](mailto:clientservices@californiaclass.com). To obtain account forms and fund documents, visit [www.californiaclass.com/document-center/](http://www.californiaclass.com/document-center/).

## Sponsored By:



LEAGUE OF  
**CALIFORNIA  
CITIES**

[www.calcities.org](http://www.calcities.org)



**California Special  
Districts Association**  
*Districts Stronger Together*

[www.csda.net](http://www.csda.net)

## CALIFORNIA CLASS FEATURES

As a California CLASS Participant, you have access to many convenient features:

- Same-day availability of funds in Prime Fund (11:00 a.m. PT cut-off)
- Contributions by wire or ACH
- Ratings of 'AAAm' & 'AAAf/S1'
- Portfolio securities marked-to-market daily
- Secure online access for transactions and account statements
- No redemption notices for Prime Fund
- Participant-to-Participant transactions
- Dividends accrue daily and pay monthly
- No maximum or minimum transaction limits
- No maximum or minimum investment requirements
- No transaction fees\*
- Annual audit conducted by independent auditing firm\*\*
- Dedicated client service representatives available via phone or email on any business day

\*You may incur fees associated with wires and/or ACH transactions by your bank, but there will be no transaction fees charged from California CLASS for such transactions.  
\*\*External audits may not catch all instances of accounting errors and do not provide an absolute guarantee of accuracy.



## What are the objectives of California CLASS?

### Safety

The primary investment objective of the California CLASS Prime Fund is preservation of principal. Both California CLASS portfolios are managed by a team of investment professionals who are solely focused on the management of public funds nationwide. The custodian for California CLASS is U.S. Bank, N.A.

### Liquidity

When you invest in the California CLASS Prime Fund, you have access to your funds on any business day. You must notify California CLASS of your funds transaction requests by 11:00 a.m. PT via the online transaction portal. There are no redemption notices for the daily-liquid California CLASS Prime Fund. The California CLASS Enhanced Cash Fund is a variable NAV fund that provides next-day liquidity and requires a one-day notification of redemption.

### Competitive Returns

California CLASS strives to provide competitive yields while adhering to the objectives of safety and liquidity. Participants can benefit from the investment expertise and institutional knowledge provided by the team of Public Trust professionals. The portfolio performance objective is strengthened by the knowledge of

California public agency cash flows that the Public Trust team possesses.

### Ease of Use

To make cash management streamlined and efficient, California CLASS includes many features that make it easy to access account information and simplify record keeping. Participants can transact on any business day via the California CLASS Online Transaction Portal at [www.californiaclass.com](http://www.californiaclass.com).

### Flexibility

You may establish multiple California CLASS subaccounts. You will receive comprehensive monthly statements that show all of your transaction activity, dividend accruals, and yield summaries. These statements have been specifically designed to facilitate public sector fund accounting and to establish a clear accounting and audit trail for your records.

### Legality

California CLASS only invests in securities permitted by California State Code Section 53601; permitted investments are further restricted to those approved by the Board of Trustees as set forth in the California CLASS Investment Policies.

**Have Questions?** Contact us or visit [www.californiaclass.com](http://www.californiaclass.com) for more information.



**Bob Shull**  
Senior Director,  
Investment Services  
[bob.shull@californiaclass.com](mailto:bob.shull@californiaclass.com)  
(925) 872-1007



**Crystal Lynn**  
Director, Investment Services  
[crystal.lynn@californiaclass.com](mailto:crystal.lynn@californiaclass.com)  
(949) 701-5400



**Jerry Legg**  
Senior Director,  
Investment Services  
[jerry.legg@californiaclass.com](mailto:jerry.legg@californiaclass.com)  
(916) 221-7833

Any financial and/or investment decision should be made only after considerable research, consideration, and involvement with an experienced professional engaged for the specific purpose. The information presented should not be used in making any investment decisions. This material is not a recommendation to buy, sell, implement, or change any securities or investment strategy, function, or process. Please review the California CLASS Information Statement(s) before investing. California CLASS is not a bank. An investment in California CLASS is not insured or guaranteed by the Federal Deposit Insurance Corporation or any other government agency. Although the California CLASS Prime Fund seeks to preserve the value of your investment at \$1.00 per share, it cannot guarantee it will do so. Please review the California CLASS Information Statement(s) before investing. Past performance is not an indication of future performance. No assurance can be given that the performance objectives of a given strategy will be achieved. Any financial and/or investment decision may incur losses. The California CLASS Prime Fund is rated 'AAAm' by S&P Global Ratings. A 'AAAm' rating by S&P Global Ratings is obtained after S&P evaluates a number of factors including credit quality, market price exposure, and management. For a full description on rating methodology, please visit [www.spglobal.com](http://www.spglobal.com). The California CLASS Enhanced Cash Fund is rated by 'AAAF/S1' by FitchRatings. The 'AAAF' rating is Fitch's opinion on the overall credit profile within a fixed-income fund/portfolio and indicates the highest underlying credit quality of the pool's investments. The 'S1' volatility rating is Fitch's opinion on the relative sensitivity of a portfolio's total return and/or net asset value to assumed changes in credit spreads and interest rates. The 'S1' volatility rating indicates that the fund possesses a low sensitivity to market risks. For a full description on rating methodology, please visit [www.fitchratings.com](http://www.fitchratings.com). Ratings are subject to change and do not remove credit risk.

Public Trust Advisors, LLC, a registered investment advisor with the U.S. Securities and Exchange Commission, provides investment advisory services to the Fund. PMA Securities, LLC, an affiliate of Public Trust Advisors, is a broker-dealer and municipal advisor registered with the SEC and MSRB and is a member of FINRA and SIPC and provides marketing, and securities and other institutional brokerage services.



## A JOINT POWERS AUTHORITY INVESTMENT POOL

### Client-First & User-Friendly Cash Management Solutions Designed for California Public Agencies of All Sizes

#### California CLASS provides Participants the following benefits:

- ✓ Convenient, modern transaction portal
- ✓ Dedicated client service team equally committed to all California public agencies
- ✓ Portfolios managed in accordance with California Government Code
- ✓ Transparent governance by Board of Trustees
- ✓ Portfolios marked-to-market with net asset value and yields posted to website daily

Fund Option	Prime	Enhanced Cash
Portfolio Type	Prime-style fund	Enhanced cash
Purpose	Operating Funds	Strategic Reserves
Rating	'AAAm'	'AAAf/S1'
Min/Max Investment	None	None
Withdrawals	Unlimited	Unlimited
Investment Horizon	Day-to-Day	12-18 Months
Liquidity	Same-Day	Next-Day
WAM	≤60 days	90-200 days
Net Asset Value (NAV)	Stable \$1.00 per share	Variable \$10.00 per share

Learn more about building an optimal liquidity portfolio for your public agency; contact us today.



**Bob Shull**  
Senior Director, Investment Services  
bob.shull@californiaclass.com  
(925) 872-1007



**Crystal Lynn**  
Director, Investment Services  
crystal.lynn@californiaclass.com  
(949) 701-5400



**Jerry Legg**  
Senior Director, Investment Services  
jerry.legg@californiaclass.com  
(916) 221-7833

Many factors affect performance including changes in market conditions and interest rates and in response to other economic, political, or financial developments. Investment involves risk including the possible loss of principal. No assurance can be given that the performance objectives of a given strategy will be achieved. The information presented should not be used in making any investment decisions. This material is not a recommendation to buy, sell, implement, or change any securities or investment strategy, function, or process. Any financial and/or investment decision should be made only after considerable research, consideration, and involvement with an experienced professional engaged for the specific purpose. California CLASS is not a bank. An investment in California CLASS is not insured or guaranteed by the Federal Deposit Insurance Corporation or any other government agency. Although the California CLASS prime-style fund seeks to preserve the value of your investment at \$1.00 per share, it cannot guarantee it will do so. Please review the California CLASS Information Statement before investing. California CLASS is rated 'AAAm' by S&P Global Ratings. A 'AAAm' rating by S&P Global Ratings is obtained after S&P evaluates a number of factors including credit quality, market price exposure, and management. For a full description on rating methodology, please visit [www.spglobal.com](http://www.spglobal.com). California CLASS Enhanced Cash is rated 'AAAf/S1' by FitchRatings. The 'AAAf' rating is Fitch's opinion on the overall credit profile within a fixed-income fund/portfolio and indicates the highest underlying credit quality of the pool's investments. The 'S1' volatility rating is Fitch's opinion on the relative sensitivity of a portfolio's total return and/or net asset value to assumed changes in credit spreads and interest rates. The 'S1' volatility rating indicates that the fund possesses a low sensitivity to market risks. For a full description on rating methodology, please visit [www.fitchratings.com](http://www.fitchratings.com). Ratings are subject to change and do not remove credit risk. For risks associated with investing in both a prime-style and enhanced cash-style local government investment pool, please visit [www.californiaclass.com/rates-disclaimer](http://www.californiaclass.com/rates-disclaimer). Past performance is no guarantee of future results. Any financial and/or investment decision may incur losses.

Public Trust Advisors, LLC, a registered investment advisor with the U.S. Securities and Exchange Commission, provides investment advisory services to the Fund. PMA Securities, LLC, an affiliate of Public Trust Advisors, is a broker-dealer and municipal advisor registered with the SEC and MSRB and is a member of FINRA and SIPC and provides marketing, and securities and other institutional brokerage services.



California CLASS Participant List September 2024

Counties

El Dorado County	Lake County
Sonoma County Treasurer	

Municipalities

City of Artesia	City of Barstow
City of Beaumont	City of Bishop
City of Brentwood	City of Farmersville
City of Folsom	City of Fowler
City of Fullerton	City of Gilroy
City of Hanford	City of Hemet
City of Kingsburg	City of Lancaster
City of Martinez	City of Moreno Valley
City of Morgan Hill	City of Oroville
City of Porterville	City of Santa Ana
City of Shafter	City of Signal Hill
City of Solvang	City of Wasco
City of Williams	Town of Fort Jones
Town of Paradise	

Other

California CLASS Enhanced Cash	California Special Districts Association
CSDA Finance Corporation	League of California Cities
Public Agencies Self-Insurance System	Regional Government Services Authority
Sewer Authority Mid-Coastside	Silicon Valley Clean Water
Special District Leadership Foundation	Special District Risk Management Authority
Tri-County Water Authority	

Special Districts

Alameda County Mosquito Abatement District	<b>Alpine Fire Protection District</b>
Alpine Springs County Water District	Altadena Library District
Anderson Springs Community Service District	Artesia Cemetery District
Atwell Island Water District	Avila Beach Community Services District
Banning Library District	Beaumont Library District

California CLASS Participant List September 2024

Bell Canyon Community Services District	Big Bear Airport District
Bighorn - Desert View Water Agency	<b>Bolinas Fire Protection District</b>
<b>Bonita Sunnyside Fire Protection District</b>	Brooktrails Township Community Services District
Cabazon Water District	Camarillo Health Care District
Castroville Cemetery District	<b>Central Fire District of Santa Cruz County</b>
Channel Islands Beach Community Services District	Chester Public Utility District
Chico Area Recreation & Park District	Chino Basin Water Conservation District
Chino Basin Watermaster	City of Big Bear Lake, Department of Water and Power
Clearlake Oaks County Water District	Clovis Veterans Memorial District
Coachella Valley Resources Conversation District	Coalinga - Huron Recreation & Parks District
<b>Coastside Fire Protection District</b>	Cobb Area County Water Dist
Contra Costa Mosquito & Vector Control District	Copper Valley Community Services District
Corcoran Irrigation District	Corning Healthcare District
Costa Mesa Sanitary District	Cosumnes Community Services District
Crescenta Valley Water District	Del Puerto Health Care District
Delano Mosquito Abatement District	Delhi County Water District
Desert Recreation District	Durham Irrigation District
Durham Recreation & Park District	East Orange County Water District
Emerald Bay Service District	Fallbrook Regional Health District
Feather River Resource Conservation District	Georgetown Divide P.U.D.
Glenn County Resource Conservation District	Gold Coast Transit District
Gold Mountain Community Services District	Goleta Sanitary District
Grossmont Healthcare District	Groveland Community Services District
Helendale Community Services District	Heritage Ranch Community Services District
Herlong Public Utility District	Hilmar County Water District
Humboldt Bay Municipal Water District	Humboldt Community Services District
Idyllwild Water District	Igo Ono Community Services District
Indian Valley Community Services District	Ironhouse Sanitary District
Kensington Police Protection and Community Services District	<b>Kenwood Fire Protection District</b>
Keyes Community Services District	La Puente Valley County Water District
Lake Oroville Area Public Utility District	<b>Lakeside Fire Protection District</b>
Las Gallinas Valley Sanitary District	Leucadia Wastewater District
Littlerock Creek Irrigation District	Livermore Area Recreation and Park District
Los Alamos Cemetery District	Madera Irrigation District

California CLASS Participant List September 2024

Mariana Ranchos County Water District	Marina Coast Water District
Mark Twain Health Care District	McKinleyville Community Services District
Mendocino Coast Recreation and Park District	Mendocino County Russian River Flood Control & WCID
Mendocino County Waterworks District II	Midway City Sanitary District
Mission Hills Community Services District	Mojave Water Agency
Montecito Sanitary District	Monterey Peninsula Water Management District
Murphy's Sanitary District	Murrieta Valley Cemetery District
North County Cemetery District	<b>North County Fire Protection District, San Diego County</b>
North Humboldt Recreation and Park District	North of River Sanitary District No. 1
North Tahoe Public Utility District	Oceano Community Services District
Olympic Valley Public Service District	Orange County Cemetery District
Oxnard Harbor District	Palos Verdes Library District
Paradise Irrigation District	Paradise Recreation & Park District
Pauma Municipal Water District	Phelan Pinon Hills Community Services District
Pico Water District	Pine Grove Community Service District
Placentia Library District	Pleasant Valley County Water District
Pleasant Valley Recreation and Park District	Potter Valley Irrigation District (PVID)
Rainbow Municipal Water District	Rancho Murietta Community Services District
<b>Rancho Santa Fe Fire Protection District</b>	Reclamation District No. 1000
Resource Conservation District of Greater San Diego County	Rim of the World Recreation and Park District
Rio Linda Elverta Recreation and Park District	Rossmoor Los Alamitos Area Sewer District
San Antonio Basin Water District	San Diego County Citrus Pest Control District
San Gabriel Valley Mosquito and Vector Control District	San Mateo County Mosquito and Vector Control District
<b>San Miguel Consolidated Fire Protection District</b>	San Simeon Community Services District
Sanitary District No. 5 of Marin County	Santa Cruz Port District
Santa Maria Public Airport District	Santa Maria Valley Water Conservation District
Santa Ynez River Water Conservation District	Scotts Valley Water District
Shandon-San Juan Water District	Sierra Resource Conservation District
Sonoma Resource Conservation District	<b>Sonoma Valley Fire District</b>
South Placer M.U.D.	Stockton East Water District
Tahoe - Truckee Sanitation Agency	Tahoe City Public Utility District
Tehachapi Valley Recreation and Park District	Temecula Public Cemetery District
Templeton Community Services District	Town of Discovery Bay - Community Services District
Trabuco Canyon Water District	<b>Tracy Rural County Fire Protection District</b>

California CLASS Participant List September 2024

Truckee Donner Recreation and Park District	Truckee Sanitary District
Truckee Tahoe Airport District	Turner Island Water District
Twain Harte Community Services District	Twentynine Palms Water District
Union Public Utility District	Vandenberg Village Community Services District
Ventura River Water District	<b>Vista Fire Protection District</b>
Wallace Community Services District	Walnut Valley Water District
Weott Community Services District	West Basin Municipal Water District
West County Wastewater District	Western Shasta Resource Conservation District
<b>Williams Fire Protection Authority</b>	Yuima Municipal Water District

**Total Participants: 205**

***Disclaimer:** This participant list is being made public as a service to our participant base. The listed participants are active as of the end of the month.*

## Invest with California CLASS Prime

Investing with California CLASS Prime could mean more for your local community. Use the California CLASS Prime investment calculator to see just how much you could have earned.

**Amount Invested**

**Start Date**

**End Date**

You would have earned  
**\$4,311.19**  
 on your investment if you started on  
**September 1, 2024**

California CLASS Prime Investment Income Earned				
As of Date	Time	\$1M	\$5M	\$10M
Sep 01 - Sep 30	1 month	\$4,311	\$21,556	\$43,112
Apr 01 - Sep 30	6 months	\$27,210	\$136,051	\$272,103
Oct 01 - Sep 30	12 months	\$55,791	\$278,953	\$557,905

Months listed are in the years 2023-2024

### California CLASS Prime Daily Yields as of Month-End

Month	Year	Month-End Yield
September	2024	5.0409%
August	2024	5.4036%
July	2024	5.4348%
June	2024	5.4111%
May	2024	5.4134%
April	2024	5.3199%
March	2024	5.4330%
February	2024	5.4375%
January	2024	5.4710%
December	2023	5.5508%
November	2023	5.5691%
October	2023	5.5540%

For more information on both historical yields and annualized performance, visit [www.californiaclass.com/rates](http://www.californiaclass.com/rates) or scan the below QR code:



Data unaudited. Charts and/or values presented may not add up precisely to absolute figures due to rounding. Performance results are shown net of all fees and expenses and reflect the reinvestment of dividends and other earnings. Many factors affect performance including changes in market conditions and interest rates and in response to other economic, political, or financial developments. Investment involves risk including the possible loss of principal. No assurance can be given that the performance objectives of a given strategy will be achieved. California CLASS Prime is not a bank. An investment in California CLASS Prime is not insured or guaranteed by the Federal Deposit Insurance Corporation or any other government agency. Although the California CLASS Prime stable NAV fund(s) seek to preserve the value of your investment at \$1.00 per share, this is not guaranteed. Please review the applicable Information Statement(s) before investing. **Past performance is no guarantee of future results. Any financial and/or investment decision may incur losses.**

Public Trust Advisors, LLC, a registered investment advisor with the U.S. Securities and Exchange Commission, provides investment advisory services to the Fund. PMA Securities, LLC, an affiliate of Public Trust Advisors, is a broker-dealer and municipal advisor registered with the SEC and MSRB and is a member of FINRA and SIPC and provides marketing, and securities and other institutional brokerage services.



---

**California CLASS Registration Packet**



## Welcome to California CLASS

Thank you for choosing California CLASS!

This packet contains all the materials necessary to set up your California CLASS account(s). If you have any questions about the registration process or about your California CLASS account(s), please do not hesitate to contact us. The California CLASS Client Service team can be reached any business day from 8:00 a.m. to 4:00 p.m. PT by phone at (877) 930-5213 or by email at [clientservices@californiaclass.com](mailto:clientservices@californiaclass.com).

California CLASS is not a bank. An investment in California CLASS is not insured or guaranteed by the Federal Deposit Insurance Corporation or any other government agency. Although California CLASS Prime seeks to preserve the value of your investment at \$1.00 per share, there is no guarantee it will do so. Please read the applicable California CLASS Information Statements carefully before making an investment decision. Many factors affect performance including changes in market conditions and interest rates and in response to other economic, political, or financial developments. Investment involves risk including the possible loss of principal. No assurance can be given that the performance objectives of a given strategy will be achieved. Past performance is no guarantee of future results. Any financial and/or investment decision may incur losses.

## Registration Procedures

**To participate in California CLASS, please complete the following:**

- 1) Review the Joint Exercise of Powers Agreement and the applicable Information Statements relating to the California CLASS Prime Fund and the Enhanced Cash Fund (located in the Document Center at [www.californiaclass.com](http://www.californiaclass.com)).
- 2) Complete the California CLASS Participant Representation Form (page 4).
- 3) Complete the Participant Registration (page 5).
- 4) Complete the Authorized Contacts Form (pages 6/7). California CLASS recommends having multiple Authorized Signers to help prevent fraud.
- 5) Should you be interested in participating in California CLASS Prime, complete the California CLASS Prime Fund Account(s) to be Established form; you may open as many accounts as you wish (page 8).
- 6) Should you be interested in participating in California CLASS Enhanced Cash, complete the Enhanced Cash Participant Acknowledgement Form (page 9) and the California CLASS Enhanced Cash Fund Account(s) to be Established Form; you may open as many accounts as you wish (page 10).
- 7) Should you be interested in establishing Dual Authorization on the account, the Dual Authorization Form can be completed (page 11)
- 8) Keep the original forms for your records and send the completed packet to the California CLASS Client Service team by fax (877) 930-5214 or by email [clientservices@californiaclass.com](mailto:clientservices@californiaclass.com).

**Questions? Please contact us; we would love to hear from you:**

California CLASS Client Service Team  
T (877) 930-5213  
[clientservices@californiaclass.com](mailto:clientservices@californiaclass.com)

Through the California CLASS website, [www.californiaclass.com](http://www.californiaclass.com), Participants will be regularly informed of important program information, holidays, upcoming Board meetings, Participant events, conferences, and more. Board of Trustee meetings, which are open to the public, are generally held quarterly and discuss relevant issues to the governance and operations of the California CLASS program.





## Participant Representation Form

### Participant Information

Entity Name (Participant) \_\_\_\_\_

### Participant Representations

The undersigned Authorized Signer for the Participant hereby represents and warrants the following during the period the Participant is investing in the California CLASS Investment Program:

- The Participant is (1) a Public Agency (as defined in the Joint Exercise of Powers Agreement) and (2)(a) a political subdivision of the State of California or (b) an organization whose income is excluded from taxable gross income under Section 115 of the Internal Revenue Code, in each case, that has the authority to invest funds in its treasury in investments in accordance with Section 53601 of the California Government Code.
- The Participant is authorized to invest in the California CLASS.
- Any Authorized Signer for the Participant designated in this California CLASS Registration Packet has full power and authority to make investments for the above Participant in the California CLASS Investment Program unless the California CLASS receives written notice from the Participant otherwise.
- The Participant has reviewed and agrees to the limitations described in the Joint Exercise of Powers Agreement and the Information Statements for the Funds within the California CLASS Investment Program and acknowledges that it has been supplied with or been given access to information it requested in connection with making an investment in the California CLASS Investment Program.
- The Participant has reviewed the Investment Policies for the Funds within the California CLASS Investment Program and has determined that they are consistent with the legal and policy limitations applicable to the Participant’s investments.
- The Participant has consulted with its own counsel and advisers as to all matters concerning investment in the California CLASS Investment Program.

### Authorized Representative

_____ Signature	_____ Date
_____ Print Name	_____ Title

Many factors affect performance including changes in market conditions and interest rates and in response to other economic, political, or financial developments. Investment involves risk including the possible loss of principal. No assurance can be given that the performance objectives of a given strategy will be achieved. Past performance is no guarantee of future results. Any financial and/or investment decision may incur losses.



### Participant Registration

**Entity Information**

Entity Name (Participant) \_\_\_\_\_

Entity Type:            City/Town                            County                            School District                            Special District  
Other (Specify) \_\_\_\_\_

Mailing Address \_\_\_\_\_

City \_\_\_\_\_ Zip \_\_\_\_\_ County \_\_\_\_\_

Physical Address (if different than above) \_\_\_\_\_

City \_\_\_\_\_ Zip \_\_\_\_\_ County \_\_\_\_\_

Tax ID \_\_\_\_\_ Fiscal Year End Date (Month/Day) \_\_\_\_\_

California CLASS and its transfer agent and administrator are authorized by the Participant to act on any instructions believed to be genuine for any service authorized on this form. To the extent permitted by law, the Participant agrees that California CLASS, its transfer agent, and administrator, Public Trust Advisors LLC, and their respective officers, directors, affiliates, representatives, employees and agents (each an "Indemnified Party") will not be liable for any losses, claims, expenses and liabilities (collectively, the "Losses") that result from accepting such instructions, and agrees to indemnify and hold harmless each Indemnified Party from and against any and all Losses arising from or resulting from such reliance on, or acceptance of, such instructions. Withdrawal proceeds can be sent only to the bank(s) indicated below unless changed by written instructions. Each Participant is responsible for notifying California CLASS of any changes to its account(s). Wires will be distributed every hour with the final distribution ending at 11:00 a.m. PT; distribution times are subject to change as needed by the California CLASS Administrator. Additionally, California CLASS must be notified of any contributions by 11:00 a.m. PT to receive same day credit. **If funds are not received by 2:00 p.m. PT, contribution orders will be voided.**

**Banking Information**

Bank Name \_\_\_\_\_ Bank Routing Number (ABA) \_\_\_\_\_

Account Title \_\_\_\_\_ Account Number \_\_\_\_\_

Bank Contact\* \_\_\_\_\_ Contact's Phone Number \_\_\_\_\_

Wire                            ACH                            Both

**Additional Banking Information (Optional)**

Bank Name \_\_\_\_\_ Bank Routing Number (ABA) \_\_\_\_\_

Account Title \_\_\_\_\_ Account Number \_\_\_\_\_

Bank Contact\* \_\_\_\_\_ Contact's Phone Number \_\_\_\_\_

Wire                            ACH                            Both

\*If there will only be one Authorized Signer on the California CLASS account, bank contact must be provided to verify bank account information



### Authorized Contacts

Authorized Signers Can:	Read-Only Users Can:
Approve changes to the Investor Profile	Receive account updates
Update banking/contact information	Request "view-only" access to monthly statements and transaction confirmations
View and process transactions	
Receive account updates	View banking/contact information

#### Authorized Signer

Print First and Last Name

Title

**Signature Required**

Phone (Required)\*\* Extension

Email (Required)

Mobile\*\*

#### Additional Contact (Optional) – Note: California CLASS strongly advises each Participant to have multiple authorized signers to help prevent fraud

Print First and Last Name

Title

**\*(Signature Required if Authorized Signer)**

Phone (Required)\*\* Extension

Email (Required)

Mobile\*\*

#### Permissions (check one only)

- Authorized Signer to Move Funds\*
- Read-Only Access

#### Additional Contact (Optional)

Print First and Last Name

Title

**\*(Signature Required if Authorized Signer)**

Phone (Required)\*\* Extension

Email (Required)

Mobile\*\*

#### Permissions (check one only)

- Authorized Signer to Move Funds\*
- Read-Only Access

**\*\* A phone number that you can be reached at directly is required to receive the multi-factor authentication code via phone call. Mobile numbers can receive the code via phone call or text.**

All contacts listed on an account will receive email notifications when transaction confirmation documents and monthly statements are available for download in the online portal.

## Authorized Contacts (cont.)

### Additional Contact (Optional)

Print First and Last Name

Title

**\*(Signature Required if Authorized Signer)**

Phone (Required)\*\* Extension

Email (Required)

Mobile\*\*

**Permissions** (check one only)

- Authorized Signer to Move Funds\*
- Read-Only Access

### Additional Contact (Optional)

Print First and Last Name

Title

**\*(Signature Required if Authorized Signer)**

Phone (Required)\*\* Extension

Email (Required)

Mobile\*\*

**Permissions** (check one only)

- Authorized Signer to Move Funds\*
- Read-Only Access

### Additional Contact (Optional)

Print First and Last Name

Title

**\*(Signature Required if Authorized Signer)**

Phone (Required)\*\* Extension

Email (Required)

Mobile\*\*

**Permissions** (check one only)

- Authorized Signer to Move Funds\*
- Read-Only Access

**\*\* A phone number that you can be reached at directly is required to receive the multi-factor authentication code via phone call. Mobile numbers can receive the code via phone call or text.**

All contacts listed on an account will receive email notifications when transaction confirmation documents and monthly statements are available for download in the online portal.



### California CLASS Prime Fund Account(s) to be Established

Entity Name (Participant): \_\_\_\_\_

Desired Subaccount Name(s)\* i.e. General Fund, etc.:

(To be completed by Participant, **at least one Subaccount is required**)

\_\_\_\_\_

\_\_\_\_\_

\_\_\_\_\_

\_\_\_\_\_

\_\_\_\_\_

\_\_\_\_\_

\_\_\_\_\_

\_\_\_\_\_

\_\_\_\_\_

\_\_\_\_\_

\_\_\_\_\_

\_\_\_\_\_

\_\_\_\_\_

\_\_\_\_\_

\*Name must be limited to 35 characters.

Once your California CLASS account has been established, you will receive a confirmation email with your login credentials from [no-reply@californiaclass.com](mailto:no-reply@californiaclass.com). If you do not receive your login credentials within 48 business hours of submission, please first check your junk or spam folder before calling the California CLASS Client Service team.



## Enhanced Cash Participant Acknowledgement Form

### Participant Information

Entity Name (Participant) \_\_\_\_\_

### Participant Acknowledgement

The undersigned Authorized Signer for the Participant hereby acknowledges the following:

- The Participant has received and reviewed the California CLASS Enhanced Cash Information Statement.
- All Enhanced Cash investments are made in accordance with the California CLASS Enhanced Cash Investment Policy.
- California CLASS Enhanced Cash is designed to complement the daily liquidity of the California CLASS Prime Fund by gaining exposure to a diversified portfolio of high-quality securities. California CLASS Enhanced Cash is better suited for funds not needed on a frequent or near-term basis. California CLASS Enhanced Cash is designed for investors with a slightly longer investment horizon and the ability to tolerate a higher risk profile.
- California CLASS Enhanced Cash does not seek to maintain a stable net asset value (NAV) and does not offer daily liquidity. Unlike the California CLASS Prime Fund, investing in California CLASS Enhanced Cash introduces the potential for the reporting of unrealized and realized gains and losses.
- Withdrawals are unlimited and met on a transaction date plus one (1) business day basis (T+1).

### Authorized Signer

\_\_\_\_\_  
Signature

\_\_\_\_\_  
Date

\_\_\_\_\_  
Printed Name

\_\_\_\_\_  
Title

The investment advisor providing these services is Public Trust Advisors, LLC (Public Trust), an investment adviser registered with the SEC under the Investment Advisers Act of 1940, as amended. Registration with the SEC does not imply a certain level of skill or training. Additionally, this registration provides no guarantee of return or protection against loss. California CLASS is not a bank. An investment in California CLASS is not insured or guaranteed by the Federal Deposit Insurance Corporation or any other government agency. Please read the applicable California CLASS Information Statements carefully before making an investment decision. Many factors affect performance including changes in market conditions and interest rates and in response to other economic, political, or financial developments. Investment involves risk including the possible loss of principal. No assurance can be given that the performance objectives of a given strategy will be achieved. Past performance is no guarantee of future results. Any financial and/or investment decision may incur losses.



## California CLASS Enhanced Cash Fund Account(s) to be Established

Entity Name (Participant): \_\_\_\_\_

Desired Subaccount Name(s)\*:

(To be completed by Participant)

\_\_\_\_\_

\_\_\_\_\_

\_\_\_\_\_

\_\_\_\_\_

\_\_\_\_\_

\_\_\_\_\_

\_\_\_\_\_

\_\_\_\_\_

\_\_\_\_\_

\_\_\_\_\_

\_\_\_\_\_

\_\_\_\_\_

California CLASS Enhanced Cash is designed to complement the daily liquidity of the California CLASS Prime Fund. California CLASS Enhanced Cash is better suited for funds not needed on a frequent or near-term basis. California CLASS Enhanced Cash is designed for investors with a slightly longer investment horizon and the ability to tolerate a higher risk profile.

**California CLASS Enhanced Cash does not seek to maintain a stable net asset value (NAV) and does not offer daily liquidity.** Unlike the California CLASS Prime Fund, investing in California CLASS Enhanced Cash introduces the potential for the reporting of unrealized and realized gains and losses.

If you have questions about which of your local government’s funds are appropriate for the California CLASS Enhanced Cash portfolio, please contact your California CLASS representative or email [info@californiaclass.com](mailto:info@californiaclass.com).

\*Name must be limited to 35 characters.

Once your California CLASS account has been established, you will receive a confirmation email with your login credentials from [no-reply@californiaclass.com](mailto:no-reply@californiaclass.com). If you do not receive your login credentials within 48 business hours of submission, please first check your junk or spam folder before calling the California CLASS Client Service team.

## Dual Authorization Form (Optional)

Participant Name: \_\_\_\_\_

Please utilize this form to request dual authorization capabilities on your California CLASS account. Dual authorization ensures that any transaction entered via the California CLASS online transaction portal requires approval from a second Authorized Signer in order to be processed (internal transfers between subaccounts do not require dual authorization). **Note:** All Authorized Signers listed on the account can enter transactions and approve them (not just the users below).

### Request to Add Dual Authorization

Dual authorization is hereby approved for \_\_\_\_\_ by the Authorized Signer below. By approving dual authorization, the Authorized Signer acknowledges that transactions not approved by the 11:00 a.m. PT cutoff will not be processed. Please ensure transactions are entered in a timely manner and that other authorized signers are available to approve the transactions for processing.

\_\_\_\_\_  
Authorized Signer's Signature

\_\_\_\_\_  
Date

\_\_\_\_\_  
Printed Name

\_\_\_\_\_  
Title





**Sandie Arnott**  
TREASURER-TAX COLLECTOR

# SAN MATEO COUNTY INVESTMENT POOL FUND SEPTEMBER 2024 QUARTER END REPORT





# INTRODUCTION SUMMARY

Gross earnings for the month ending September 30, 2024, was 3.872%. Gross earnings for the quarter ending September 30, 2024, was 3.959%. Current average maturity of the portfolio is 1.82 years with an average duration of 1.66 years. The current Par Value of the pool is \$7.718 Billion. The largest non-government aggregate position is currently Cooperative Rabobank at 1.66%. The portfolio continues to hold no derivative products.

The estimated earnings for FY 2024-25 is 3.85%.

The San Mateo County Pool complies with Government Code Section 53646, which requires the ability to meet its expenditure requirements for the next six months.

I certify, and our compliance advisor, Silicon Valley Treasury Consulting Group, confirms these reports are in compliance with the Investment Policy dated Calendar Year 2024. Please visit our website if you wish to review Silicon Valley Treasury Consulting Group's monthly compliance report: <https://treasurer.smcgov.org/investment-information>

If you have any questions regarding any of these reports, please call me at (650) 363-4470.

Best regards,

Sandie Arnott  
Treasurer-Tax Collector



**Sandie Arnott**  
**TREASURER - TAX COLLECTOR**

**Tiffany Htwe**  
ASSISTANT TREASURER

**Kathy Nunes**  
ASSISTANT TAX COLLECTOR

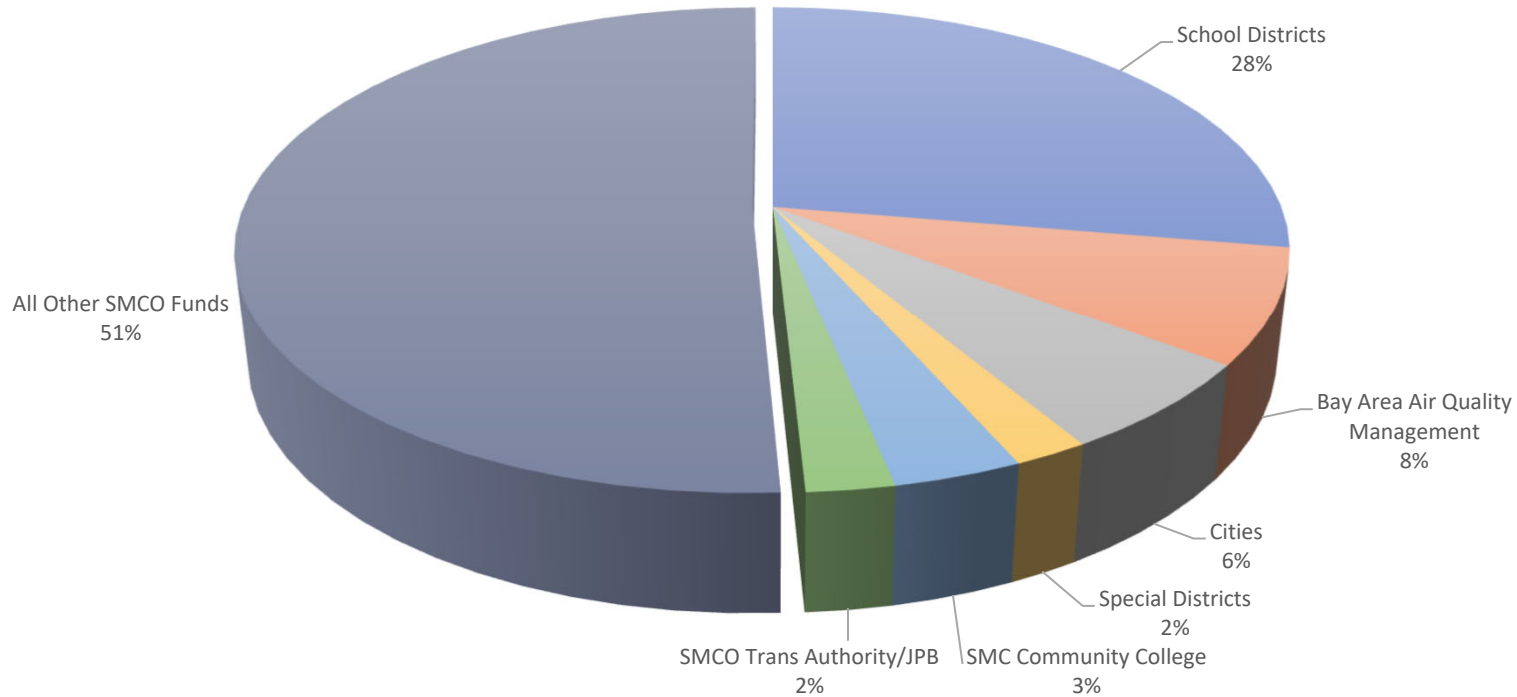
September 30, 2024

RE: SAN MATEO COUNTY INVESTMENT POOL, GASB FAIR MARKET VALUE FACTOR AS OF 09/30/24

As of September 30, 2024, the GASB fair market value factor for the San Mateo County Investment Pool is 1.00410.



## SAN MATEO COUNTY TREASURER'S OFFICE POOL PARTICIPANTS DISTRIBUTION September 30, 2024

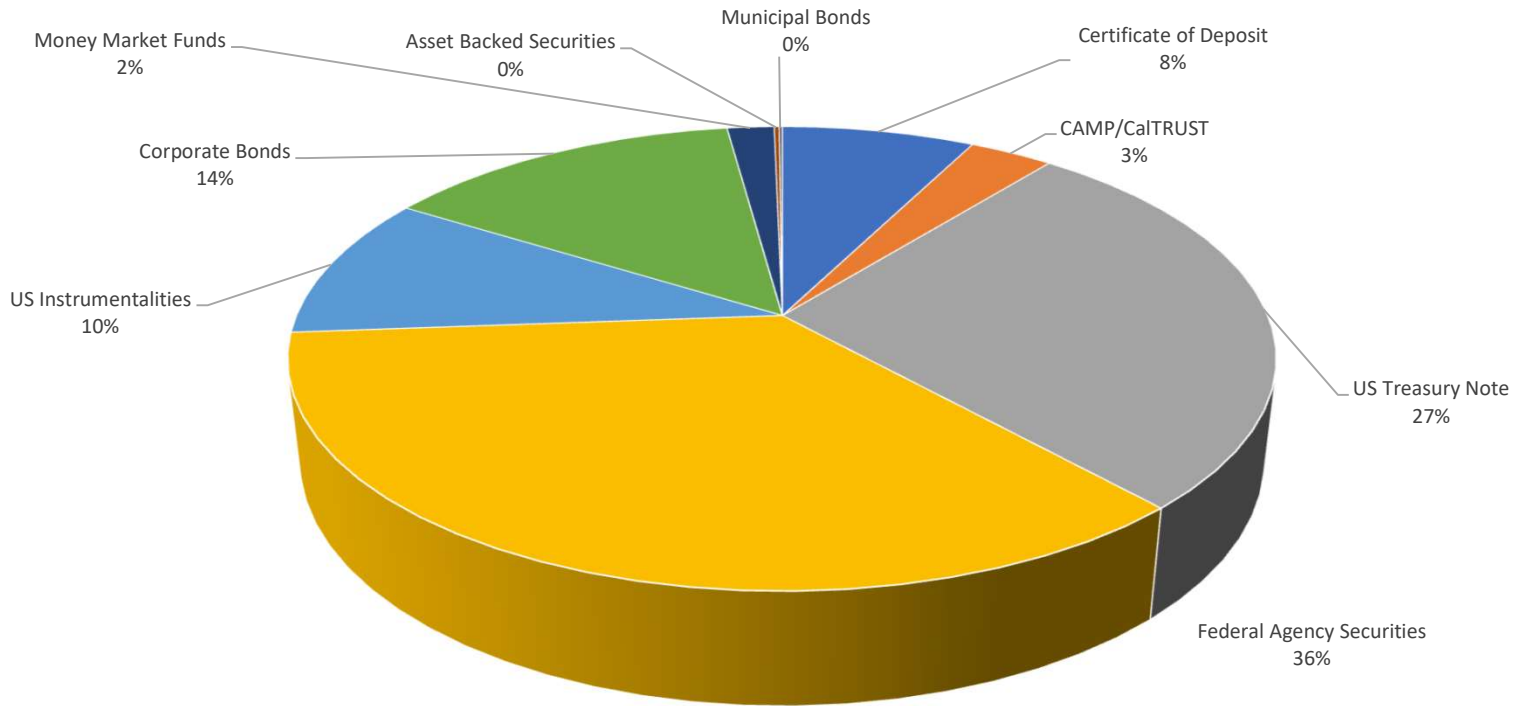


Participants	\$	%
School Districts	\$ 2,105,145,933.25	27.7%
Bay Area Air Quality Management	582,794,207.04	7.7%
Cities	461,665,251.54	6.1%
Special Districts	151,818,869.50	2.0%
SMC Community College	261,604,362.55	3.4%
SMCO Trans Authority/JPB	177,799,248.01	2.3%
All Other SMCO Funds	3,869,407,360.70	50.8%
<b>Total</b>	<b>\$ 7,610,235,232.59</b>	<b>100.0%</b>

\*Figures are based on the account balances of current pool participants and it will not match the Market Value of the pool.



**SAN MATEO COUNTY TREASURER - ASSET ALLOCATION**  
as of September 30, 2024

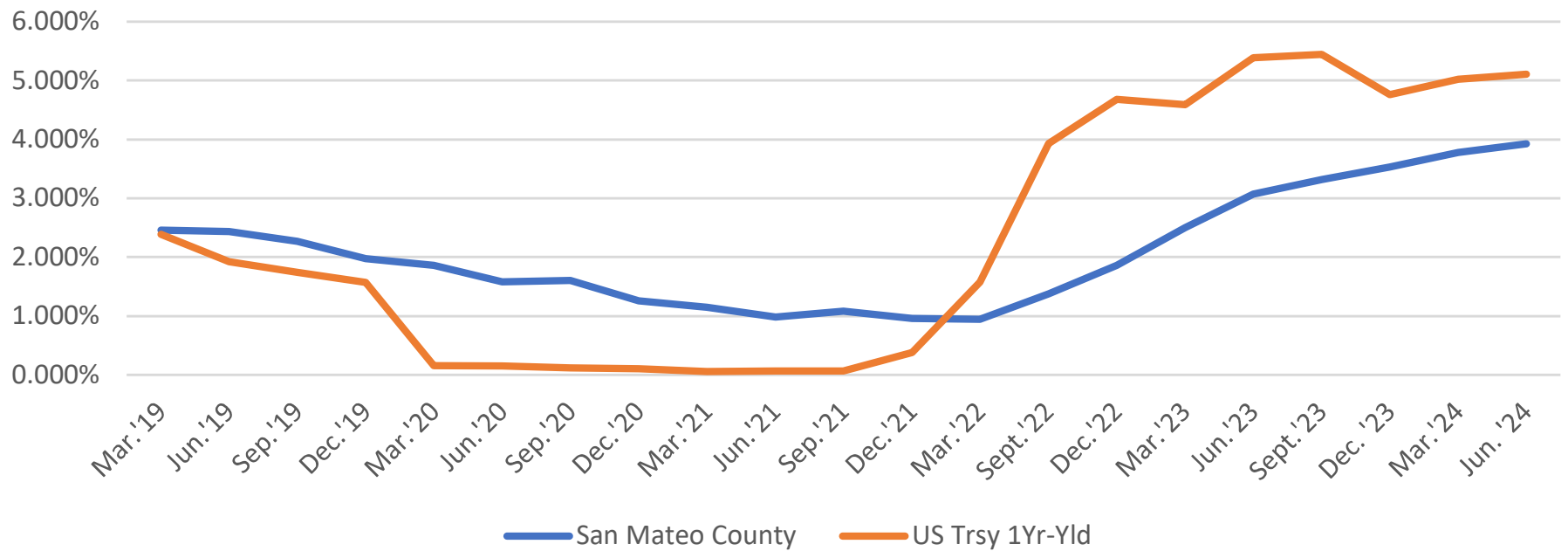


SECTOR	MARKET VALUE*	%
Certificate of Deposit	\$ 578,499,517.00	7.53%
CAMP/CalTRUST	251,452,348.06	3.27%
US Treasury Note	2,111,121,726.33	27.48%
Federal Agency Securities	2,730,248,288.75	35.54%
US Instrumentalities	768,420,808.05	10.00%
Corporate Bonds	1,076,439,058.52	14.01%
Money Market Funds	141,125,315.91	1.84%
Asset Backed Securities	14,961,085.57	0.19%
Municipal Bonds	9,509,550.78	0.12%
<b>TOTALS</b>	<b>\$ 7,681,777,698.97</b>	<b>100.00%</b>

\*Market Values listed include accrued interest for the reported period.

\*\*Due to delay in availability of data, market value for Asset Backed Securities reflected in the report is as of 8/30. Update will be made once data is available.

## County of San Mateo Historical Yield per Quarter



**RESOLUTION 24-15**

**RESOLUTION OF THE BOARD OF DIRECTORS OF THE WOODSIDE FIRE PROTECTION DISTRICT ESTABLISHING AN ACCOUNT WITH THE CALIFORNIA CLASS JOINT POWERS AUTHORITY INVESTMENT PROGRAM**

**WHEREAS**, the Woodside Fire Protection District (the "District") is a local government agency formed and operating in accordance with Sections 13800 *et seq.* of the California Health and Safety Code; and

**WHEREAS**, the District is allowed to invest funds not required for immediate needs of the District in a manner which will provide the highest investment return with the maximum security while meeting the daily cash flow demands of the District and conforming to all statutes governing the investment of District funds; and

**WHEREAS**, the District currently has these funds invested in the San Mateo County Investment Pool Fund; and

**WHEREAS**, the District has looked at alternative investment options to maximize investment return of District funds; and

**WHEREAS**, the California CLASS Investment Program, established by the joint powers authority known as California Cooperative Liquid Assets Securities System ("California CLASS"), currently provides competitive returns while adhering to the objectives of safety and liquidity; and

**WHEREAS**, the District desires to invest in one or more funds of the California CLASS Investment Program to be managed by the Investment Advisor to the California CLASS pursuant to the terms of the Joint Exercise of Powers Agreement establishing California CLASS.

**NOW, THEREFORE, BE IT RESOLVED** that the Board of Directors of the Woodside Fire Protection District authorizes the establishing of an Account with the California CLASS Investment Program (the "Account").

**BE IT FURTHER RESOLVED**, that the Fire Chief and Finance Manager, in order to establish the Account and effectuate the purposes of this Resolution, are authorized to order the deposit or withdrawal of District monies in the Account and may execute and deliver any and all necessary or advisable documents.

///

///

///

///

///

///

**BE IT FURTHER RESOLVED**, that District funding into the Account will not exceed the amount of \$10 million dollars.

PASSED, APPROVED, and ADOPTED this 29<sup>th</sup> day of October 2024, at a regular meeting of the District Board held at 808 Portola Valley Road, Portola Valley, California 94028 with the following vote.

AYES:

NOES:

ABSENT:

ABSTAIN:

Dated:

\_\_\_\_\_  
Matt Miller, President  
Board of Directors

ATTEST:

\_\_\_\_\_  
Board Secretary



**RESOLUTION 24-16**  
**A RESOLUTION OF THE WOODSIDE FIRE PROTECTION DISTRICT BOARD OF DIRECTORS DECLARING A LEASED AREA OF REAL PROPERTY TO BE EXEMPT SURPLUS LAND UNDER THE SURPLUS LAND ACT AND FINDING THIS ACTION EXEMPT FROM CEQA**

**WHEREAS**, the Woodside Fire Protection District (hereinafter identified as the "District") is a special district organized pursuant to applicable provisions of the California Health & Safety Code, and is a "local agency" within the meaning of the Surplus Land Act; and

**WHEREAS**, the District is an owner in fee simple of a parcel of real property located at 3111 Woodside Road, Woodside, California 94062, Assessor Parcel Number 072-191-070, (the "Property"); and

**WHEREAS**, on January 16, 1997, the District entered into a Personal Communications Site Service Agreement (hereinafter identified as the "Site Agreement") with Pacific Bell Mobile Services ("PBMS") to use approximately 350 square feet of the Property for installing and operating a personal communications services system; and

**WHEREAS**, on June 25, 2007, the District entered into a First Amendment of that Site Agreement recognizing TMO CA/NV LLC dba T-Mobile as successor in interest to PBMS and, among other things, extending the term of the Site Agreement, which is currently in effect and remains subject to renewal options through 2037; and

**WHEREAS**, T-Mobile West LLC ("T-Mobile"), the successor in interest to TMO CA/NV LLC, desires to enter into a Second Amendment of that Site Agreement to modify the area it is using on the Property for an antenna tower and related facilities (the "Antenna Facilities"), as described in Exhibit A to this Resolution (hereinafter identified as the "Leased Area"); and

**WHEREAS**, the Surplus Land Act, Government Code sections 54220 et seq. (as amended, the "Act"), applies when a local agency disposes of "surplus land," as that term is defined in Government Code section 54221, which includes the entering of a lease for surplus land, which is for a term longer than 15 years, inclusive of any extension or renewal options included in the terms of the initial lease, entered into on or after January 1, 2024; and

**WHEREAS**, the identified Leased Area is "surplus land" under the Surplus Land Act, because it is land owned in fee simple by the District for which the Board of Directors will take formal action (in the form of adoption of this resolution) in a regular public meeting declaring that the land is surplus and not necessary for the District's use; and

**WHEREAS**, the Act exempts certain surplus land from its requirements, including, pursuant to Government Code section 54221(f)(l)(B), land that is less than one-half acre in area and is not contiguous to land owned by a state or local agency that is used for open-space or low- and moderate-income housing purposes; and

**WHEREAS**, the Leased Area is "exempt surplus land" under the Act, because it is less than one-half acre in area and is not contiguous to land owned by a state or local agency that is used for open-space or low-and moderate-income housing purposes; and

**NOW, THEREFORE, BE IT RESOLVED**, by the Woodside Fire Protection District Board of Directors as follows:

Section 1. The above recitals are true and correct and are a substantive part of this Resolution.

Section 2. The Board of Directors hereby declares that (i) the Leased Area is surplus land and not necessary for the District's use, and (ii) the Leased Area is exempt from the Act pursuant to section 54221(f)(1)(B) of the Surplus Land Act. The basis for this declaration is the finding that the Leased Area is less than one-half acre in area and is not contiguous to land owned by a state or local agency that is used for open-space or low-and moderate-income housing purposes.

Section 3. This Resolution has been reviewed with respect to the applicability of the California Environmental Quality Act (Public Resources Code Section 21000 et seq.) ("CEQA"). The Board of Directors determines that the declaration of the Property as "exempt surplus land" under the Act does not constitute a project under CEQA, and no environmental assessment is required.

Section 4. The Fire Chief is hereby authorized to execute a proposed Second Amendment of the Site Agreement with T-Mobile to modify the area it is using on the Property for the Antenna Facilities, as described in Exhibit A to this Resolution and identified in this resolution as the Leased Area.

PASSED, APPROVED, and ADOPTED this 29th day of October 2024, at a regular meeting of the District Board held at 808 Portola Valley Road, Portola Valley, California 94028 with the following vote.

**AYES:**  
**NOES:**  
**ABSENT:**  
**ABSTAIN:**

Dated:

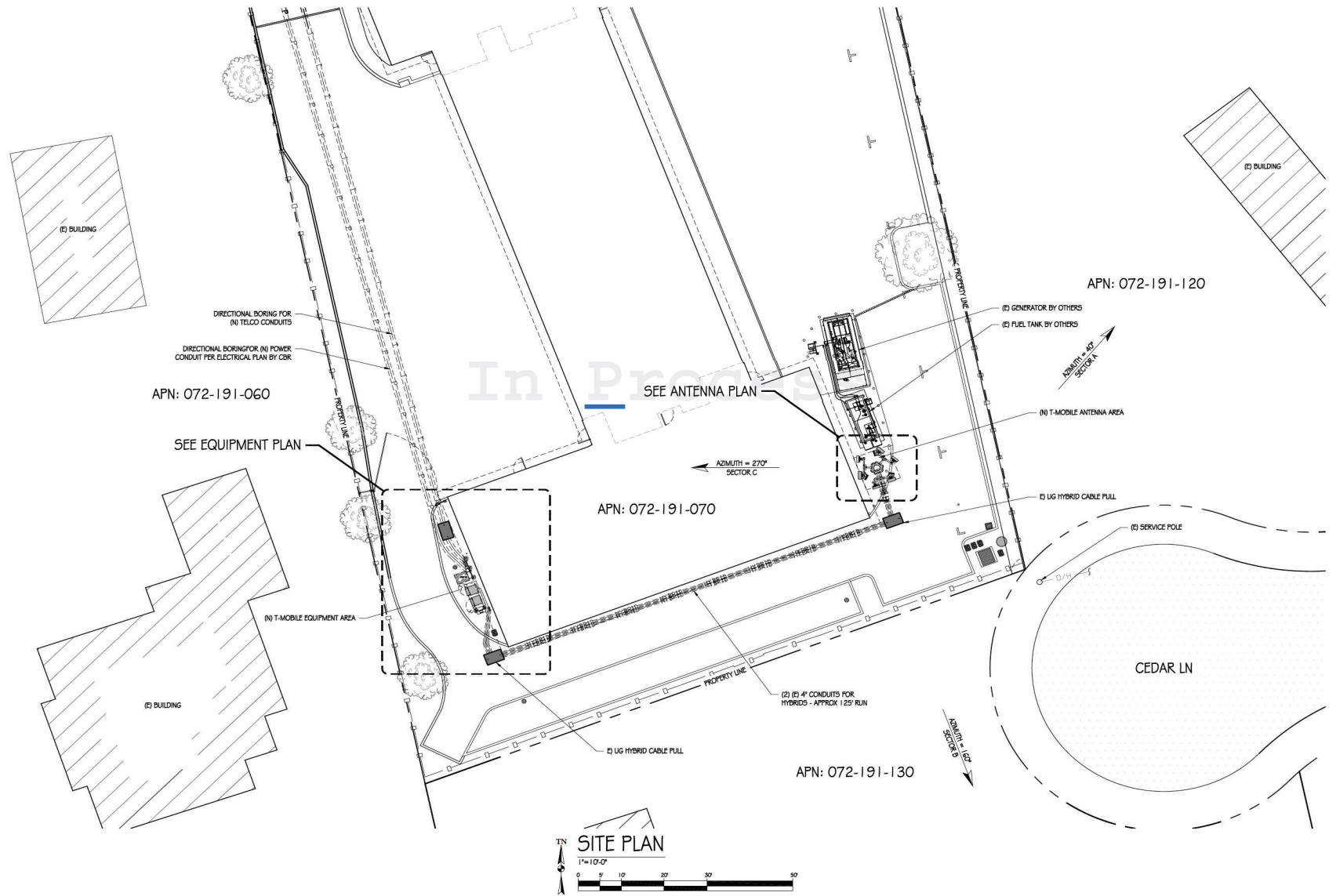
\_\_\_\_\_  
Matt Miller, President  
Board of Directors

ATTEST:

\_\_\_\_\_  
Board Secretary



# EXHIBIT A





## SICK LEAVE/WORKERS'S COMP. REPORT

<b>September 2024</b>	
<b>Sick Leave/Workers' Comp. Report</b>	
New Workers Compensation Cases	0
Retirements Announced	2
Sick Leave Shift Personnel	540.5 (12 Total)
Sick Leave Day Personnel	45 hours (3 Total)
Workers Compensation Time Off	0 hours
Light Duty	170 hours (1 Total)
Long Term Disability	240 hours (1 Total)
Bereavement Leave	0 hours
Maternity/Paternity Leave/FMLA	24 hours (1 Total)
Jury Duty	0 Hours



# Woodside Fire Protection District Training Division Report October 2024

Battalion Chief Keenan Hird

It is the mission of the Woodside Fire Training Division to provide on-going training, education and funding to our fire service personnel to ensure competent, efficient and effective emergency response.

The Training Division helps support a multitude of different areas within our organization to help accomplish our many goals. These areas include our District Training, Probationary Training, Recruit Academy support, South Zone/County Training, Continuing Education Program, PPE Program and USAR Program. The Training Division Chief, while on shift, is also a member of the SMO Training Officers Committee as well as the Training Captain who is assigned to days.

The Woodside Fire Training Cadre was developed to enhance the delivery and unify department training. The Cadre is a highly knowledgeable, skilled and certified group of firefighters dedicated to delivering modern training concepts, skills and evolutions.

Below are the topics the Training Division has covered for the month of September.

## **WOODSIDE FIRE TRAINING**

**A. Didactic Training:** The Lead Instructors for the month of September were Captain Justin Werle, Captain Beau Witsoe and Firefighter/Paramedic Chris Wels. The training topic was technical rescue. The didactic training consisted of multiple educational videos on various techniques that can be accomplished with Woodside Fire equipment.

**B. Manipulative Training:** September's manipulative training was changed from technical rescue due to the acquisition of a training house on Canada Road. Three structure fire training scenarios were



# Woodside Fire Protection District Training Division Report October 2024

Battalion Chief Keenan Hird

built by Training Chief Keenan Hird and Training Captain Chris O'Leary. Apparatus from neighboring agencies Redwood City Fire and Menlo Park Fire, were invited in order to fill the San Mateo County Structure Fire response of five fire engines, one truck and two Battalion Chiefs. Each scenario had a simulated fire in different areas of the house utilizing artificial smoke and led panels that resemble fire. The drill allowed crews to work together to mitigate multiple problems that can occur in a real incident. It also allowed Woodside Battalion Chiefs to manage the incident and the problems the firefighters faced, requiring them to change strategies and request additional resources.





# Woodside Fire Protection District Training Division Report October 2024

Battalion Chief Keenan Hird

## **SOUTH ZONE MULTI-DEPARTMENT TRAINING**

**A.** The South Zone training topic for the month of September was Auto Extrication. Crews from Redwood City Fire, Menlo Park Fire and Woodside Fire reported to Sims Metal, twice a day, over the course of a week. Each crew was given two vehicles that were stacked on each other and performed stabilization and extrication on a self-paced scenario. The pace allowed for crews to discuss options and try different tactics that they may not have attempted in previous scenarios.



## **PROBATIONARY TRAINING**

### **2023 Probationary Firefighters (Lory and Martin)**

The 2023 Probationary Firefighters have been finalizing their training sign-offs in preparation for their first block testing on Saturday, October 5th. Probationary Firefighter Scott Lory has completed his San Mateo County accreditation process and is now in his field training phase as a paramedic.

## **CONTINUING EDUCATION PROGRAM**





# Woodside Fire Protection District Training Division Report October 2024

Battalion Chief Keenan Hird

- Company Officer 2A
  - Firefighter Josh Robbins
- PTSD Insomnia Study
  - Firefighter/Paramedic Kyle Emmert

## **Meetings Attended:**

- Board of Directors
- Command Staff
- San Mateo County Training Chiefs
- Woodside Apparatus Committee



## MONTHLY EMS REPORT

October 2024

This report encapsulates the significant activities and advancements made within our Emergency Medical Services (EMS) division during the month of October.

### Overview

October has been a month of significant progress and accomplishments for our EMS division. As we continue to prioritize excellence in patient care and operational efficiency, we have achieved several milestones worth highlighting.

- **Certification Achievement**

Firefighter Scott Lory has passed his San Mateo County 5-call process and protocol exam, and is now accredited to practice as a paramedic for WFPD. This great accomplishment is a testament to Scott's hard work and dedication, and we are confident that Scott will be a valued member of our paramedic team for years to come. Scott was proctored through this process by Firefighter Paramedic Erik Lohmann, and he will continue his FTO training with Firefighter Paramedic Josh Muela. Congratulations, Scott!

- **iSimulate Equipment Improves EMS Training**

The patient and cardiac monitor simulators recently purchased from iSimulate have been introduced to crews and are now being utilized in firehouse trainings. This new equipment



will also be implemented in our upcoming EMS recertification classes, held jointly with Redwood City Fire. Our firefighters have welcomed these new additions, appreciating the realism that the manikin provides, as well as the ability to use the monitor simulator with real-time feedback based on their patient care.

- **Pediatric Advanced Workshop With Simulation (PAWWS) Training Under Way**

For the second consecutive year, Woodside has partnered with Stanford Medicine Children's Health to participate in their Pediatric Advanced Workshop With Simulation. These hands-on trainings are curated by physicians and nurses at Stanford Children's Health, recreating actual pediatric emergencies and allowing our paramedics and EMTs to practice their management of critical pediatric patients. These are incredible training opportunities that allow for real-time feedback from subject matter experts, and enhance our working relationship with one of the nation's leading children's hospitals. These trainings began at the beginning of October and will continue throughout the next month.



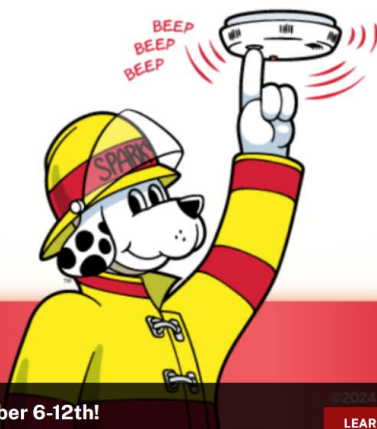
## **Conclusion**

October has been another productive month for the EMS division, marked by significant advancements in training, equipment, and operations. These developments collectively enhance our service delivery, ensuring we remain at the forefront of pre-hospital emergency care.

I am proud of the dedication and hard work demonstrated by our EMS personnel in completing the training and adapting to new equipment and systems. We will continue to monitor the impact of these changes and strive for continuous improvement in all aspects of our operations.



# SMOKE ALARMS



# Make Them WORK For You!



[fpw.org](http://fpw.org)

Fire Prevention Week is October 6-12th!  
Be aware of key smoke alarm safety tips and guidelines

©2024 National Fire Protection Association | Sparky® is a trademark of NFPA

[LEARN MORE](#)



# OCTOBER IS FIRE PREVENTION MONTH



# Prevention Division Report

Bureau of Fire Protection and Life Safety

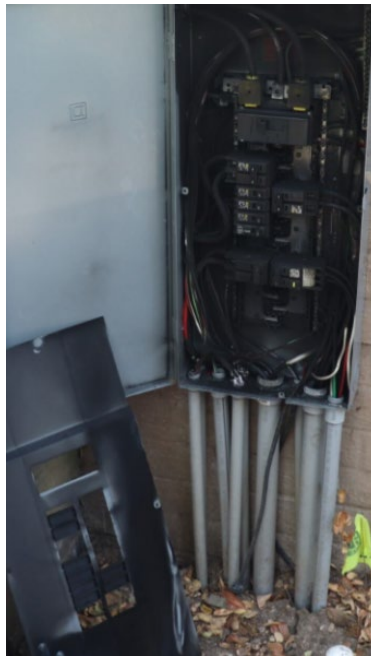
# Prevention Division

---

OCTOBER 2024

## Summary

- I. Weekly Staff Meeting – covered multiple topics from upcoming conferences, to updating new internal processes.
- II. Staff Training – On new construction permit program that is being launched on Jan. 1.
- III. Fire Investigations – there were two fires this month
  - On Whiskey Hill – 200amp main service panel on the exterior of the building, panel caught fire, no other damage.



- On Vista Verde – open deck for plank replacement, 10 feet diameter around the concrete pier (dead grass, leaves) ignited and burned around the area.



IV. New Fuel Mitigation crew member joined WFPD team, Nathan Wright. Now we have a team of 6 crew members.

V. October is Fire Prevention Month. I conducted multiple wildfire preparedness presentations (PV Ranch, PV School District and Los Trancos/Vista Verde Country Maintenance District), Home Hardening Workshop (Hosted by Town of PV Wildfire Preparedness Committee).

# Meetings

---

There are many meetings multiple staff members attend throughout the month that are not regularly scheduled, examples include (software companies, vendors, residents, council members, construction project meetings). If we were to list every meeting, it would take up multiple pages. We have listed the common recurring meetings instead.

- ✓ After Action Report with Menlo Park Fire – 8/14/24 (Marshall, Michael, David)
- ✓ Recurring every Thursday and multiple time through the month – Gray Quarter (software contractor assisting us in building the Accela software system) – (Kim)
- ✓ Recurring every Wednesday N5 meeting – (Kim)
- ✓ Recurring FM/DFM Meetings – Every other Wednesday
- ✓ Meeting with Flame Mapper – 10/10/24 (Kim)
- ✓ Recurring every Thurs at 3pm – WFPD Prevention Division Staff Meeting (All Prevention Staff)
- ✓ Recurring every 1<sup>st</sup> Thurs of the month – Town of Portola Valley Emergency Preparedness Committee Meeting (Kim)
- ✓ Recurring every 2<sup>nd</sup> Wed of the month – Town of Woodside Emergency Preparedness Committee Meeting (Kim)
- ✓ Recurring every 2<sup>nd</sup> Wed of the month – San Mateo County Fire Safe Meeting (all staff)
- ✓ Recurring every 3<sup>rd</sup> Tues of the month – Cal Fire Wildfire Mitigation Advisory Committee Meeting (Kim)
- ✓ Recurring every 3<sup>rd</sup> Wed of the month – Town of Portola Valley Wildfire Preparedness Committee (Kim)
- ✓ Recurring every 3<sup>rd</sup> Wed of the month – San Mateo County Fire Prevention Officers Association Meeting (Marshall, Michael & David)
- ✓ Recurring every 4<sup>th</sup> Tues of the month – Town of Portola Valley Conservation Committee (no attendance)
- ✓ Recurring every 4<sup>th</sup> Wed of the month – Town of Woodside Livestock and Equine Heritage Committee (no attendance)
- ✓ Recurring every 4<sup>th</sup> Fri of the month – CA Fire Chiefs Association Fire Prevention Officers meeting (no attendance this month)
- ✓ Recurring every last Tues of the month – WFPD Command Staff Meeting (Marshall)
- ✓ Recurring every last Tues of the month – WFPD Board Meeting



# Classes / Training / Misc

---

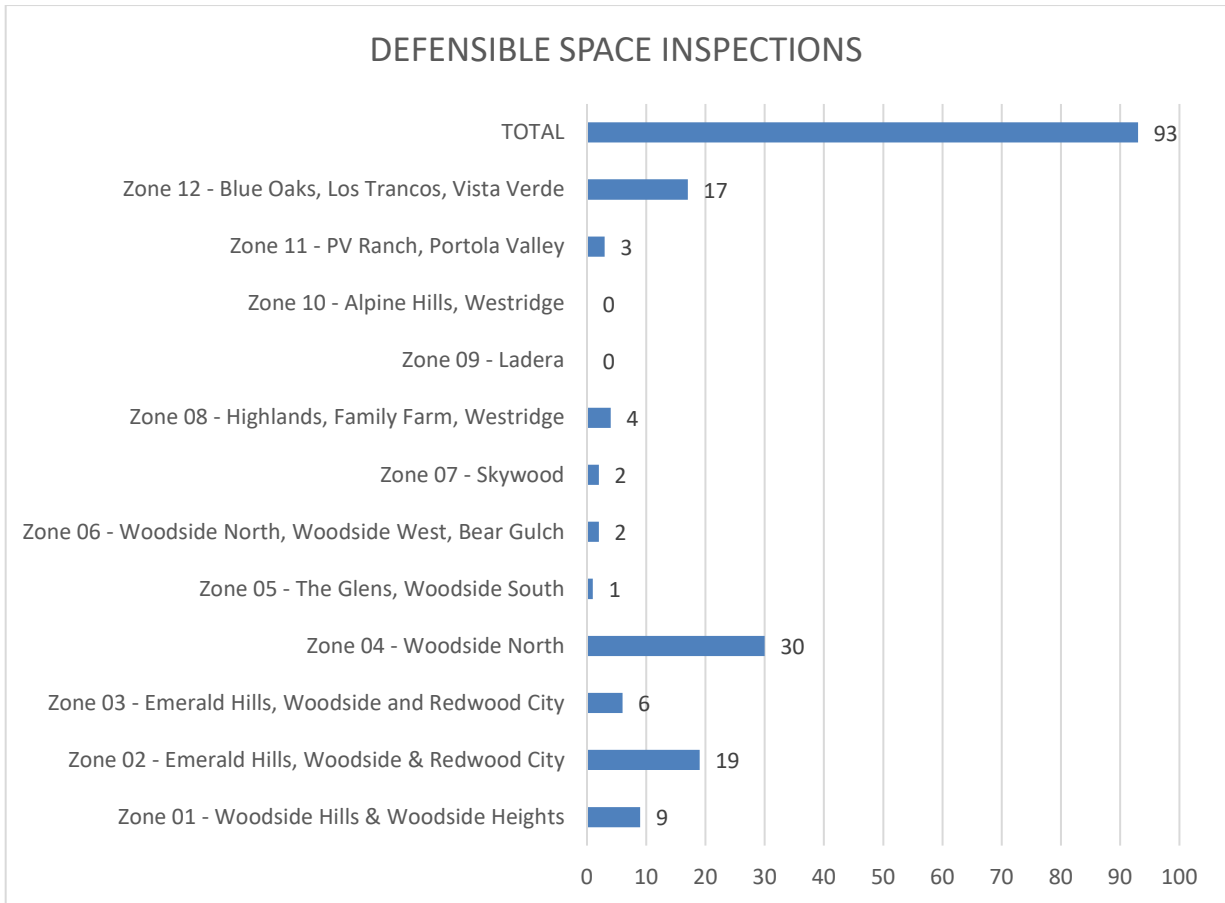
## Classes include conferences and webinars.

- ✓ California Fire Prevention Officers Association hosted State Fire Marshal's Office Certification Week:
  - Fire Inspector Michael Tamez and Public Education/Emergency Preparedness Coordinator Selena Brown attended to complete the Fire & Life Safety Certification (3 courses in the certification track)
  - Fire Marshal Kim Giuliacci completed 4 of the 5 courses in the Fire Marshal certification track
- ✓ Accela Software Training – New construction permit program (4 separate days of training)
- ✓ Microsoft 365 Training – Focused on One Drive, SharePoint and Teams - All Staff attended

# September Statistics

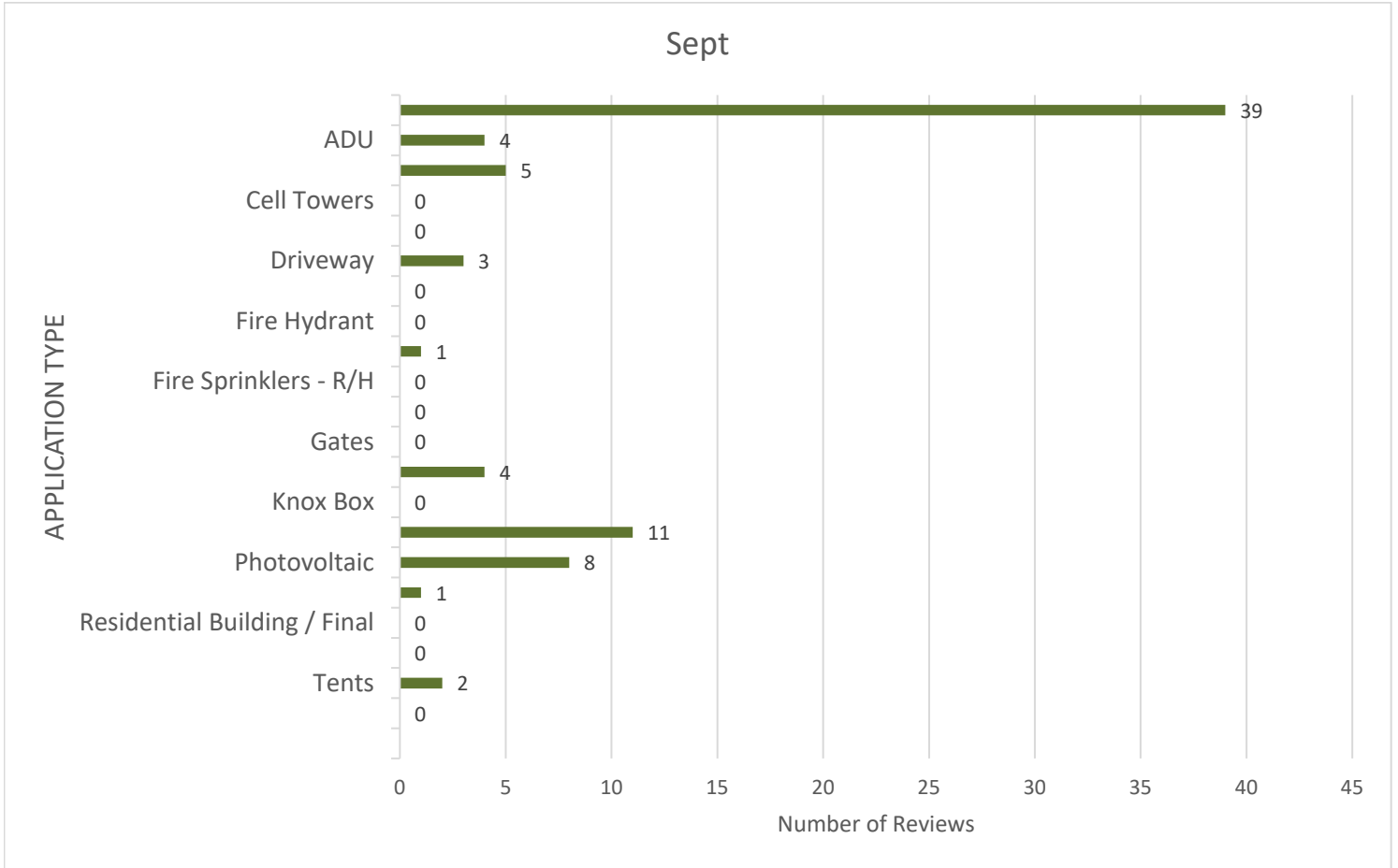
---

## DEFENSIBLE SPACE

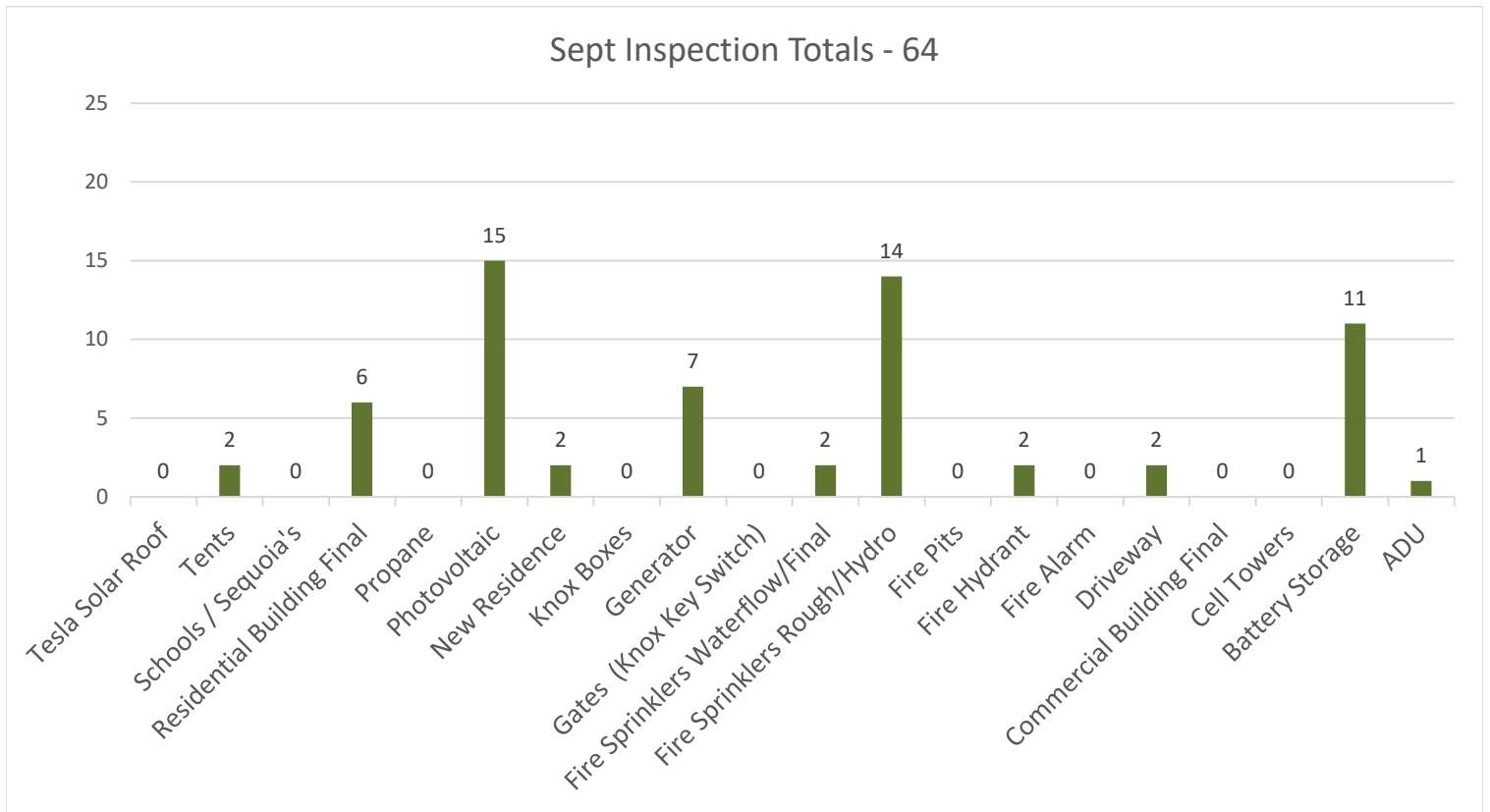


**Note: Our commitment is to complete Zones 1-4 this year. However, we have completed some outside the zones by request and due to specific circumstances.**

# PLAN REVIEWS

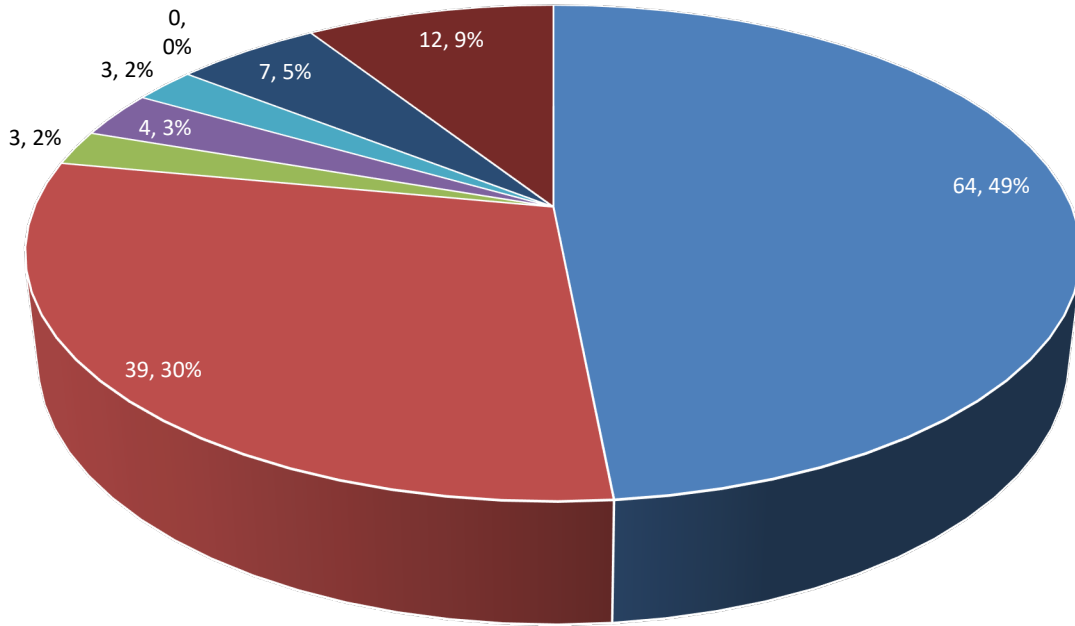


# CONSTRUCTION PERMIT INSPECTIONS



# FIRE INSPECTOR END OF MONTH NUMBERS

End of Month Numbers



- Inspections
- Plan Review
- Meetings
- Investigations
- Code Enforcement
- Public Education
- Classes/Training
- Other/Special Projects

# Fuel Mitigation Division

---

## Summary

I. This Month the Fire Mitigation crew chipped:

- Portola Valley Ranch (48 piles and 64 cubic yards chipped)
- Woodside Heights (18 piles and 13 cubic yards chipped)
- Old La Honda (116 piles and 96 cubic yards chipped)
- Woodside Highlands (22 piles and 36 cubic yards chipped)
- Woodside West and North (42 piles and 61 cubic yards chipped)
- Bear Gulch road, (16 piles and 23 cubic yards chipped)
- Palomar Park (SMC) (37 piles and 39 cubic yards chipped)

FOR A TOTAL OF **299 piles** and **332 cubic yards**

II. The crew has been working on regrowth maintenance on some of the areas that have grown back heavy and thick for the Town of Portola Valley including Westridge at Portola road and Escobar road, which is a major egress for Westridge area residents.

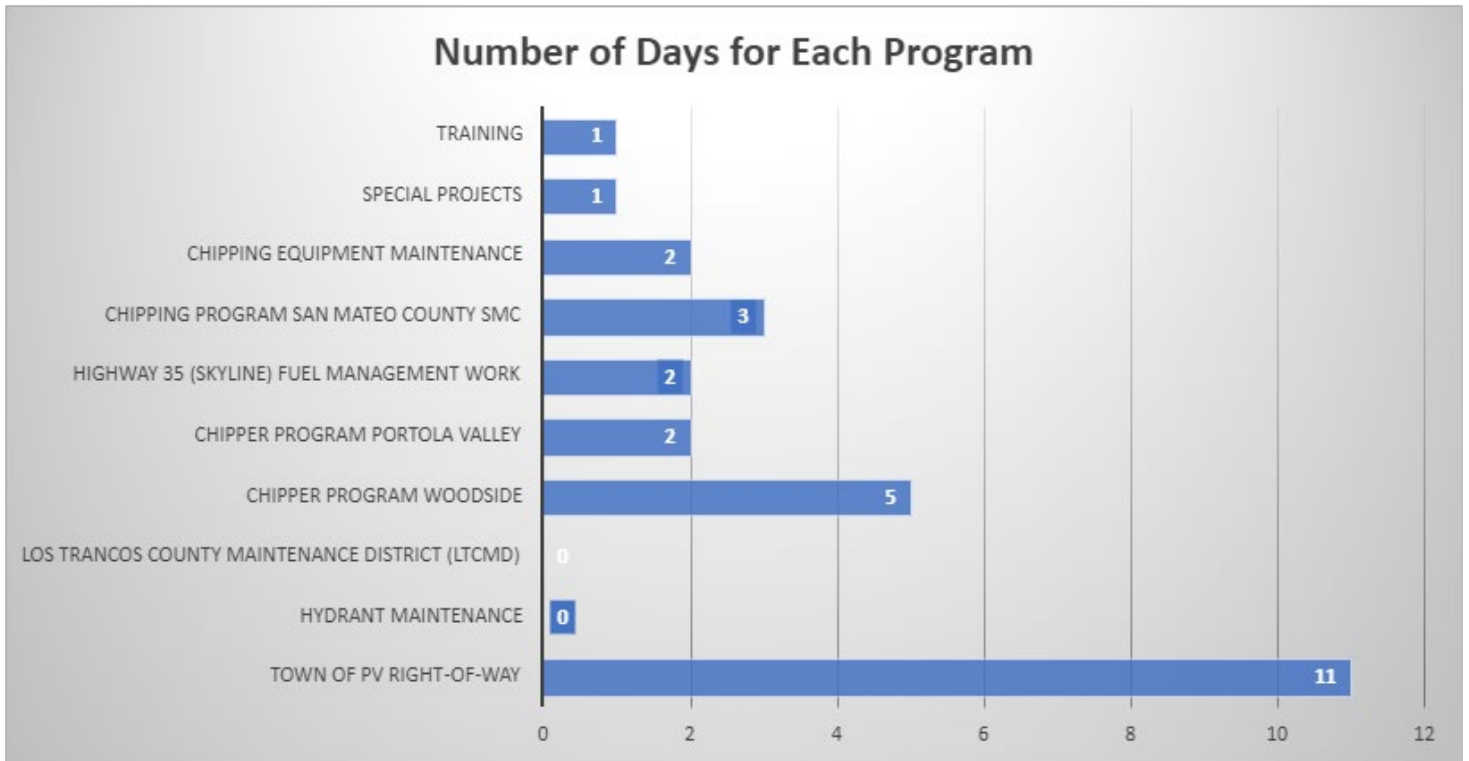
III. There was also a training on the Track chipper that was conducted making sure the crew knows how to use the remote and all the precautions and safety issues associated with that machine.

IV. The crew also continued work around the Portola Valley Town Hall.

V. The Fuel Management engineer met Mid-Peninsula Open Space District to discuss Parks with in the Fire District and potential co-op work.

VI. The Fuel Management engineer also sat in on a grant seminar for potential equipment and future Fuel Mitigation work.

# FUEL MITIGATION ACTIVITY





Westridge Before



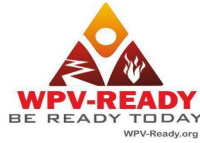
Westridge After

Town Hall Tree  
Before & After





# Public Education / Emergency Preparedness Division



WPV-READY & WPV-CERT



## Summary

As we transition into the fall season, things are picking up pace. CERT training is currently underway, with sessions held at Ladera Recreation Center to encourage local participation. We have about 15 students enrolled, and the feedback has been very positive. Alongside the standard curriculum, the Department of Emergency Management delivered specialized "Stop-the-Bleed" training, focusing on advanced bleeding control techniques. Each attendee received a complimentary Stop-the-Bleed kit (valued at \$92), courtesy of an Urban Areas Security Initiative (UASI) grant. The training will conclude this weekend with a full-day skills review and disaster simulation, taking place at Station 7.

On September 21st, our CERTs assisted with the annual Portola Valley Zots to Tots Fun Run and Town Picnic. They collaborated with the Sheriff's Office to apply their radio skills, helping to ensure a safe event. Following the run, we conducted outreach to promote WPV-Ready, WPV-CERT, and Woodside Fire.

On October 13th, WPV-CERT provided first aid support at the Day of the Horse event in Woodside. Thankfully, only one minor incident occurred, where a little girl needed a small band-aid for her thumb.

Fire Prevention Week kicked off on October 6th and ran through the 12th, but we're continuing fire safety education in schools throughout October, November, and December.

Schools also participated in the Great ShakeOut on October 17th, which was a great opportunity for staff and students to refresh their earthquake preparedness skills. Corte Madera School even implemented its Incident Command System for Schools and practiced assigned roles.

Finally, we recently hosted another Disaster Preparedness & Survival training for residents. Thanks to state funding, which covers course materials and additional instructors, we were able to offer this training free of charge, and it was a full house!

Attached is the latest edition of our Public Education Newsletter.

## Events

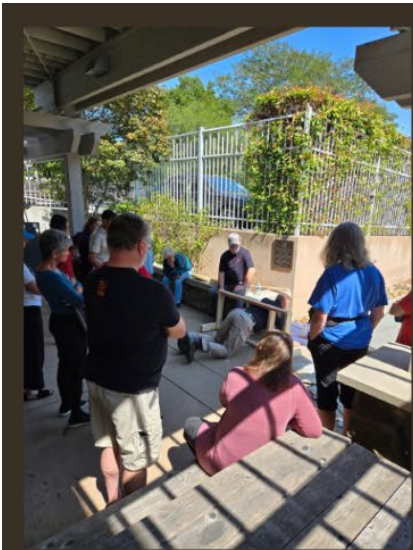
---

- ✓ CERT GMRS Radio Check-in (every Tuesday at 7:30pm)
- ✓ CERT Training in Ladera (every Tuesday starting Sept 10<sup>th</sup> – Oct 22<sup>nd</sup>)
- ✓ Zots to Tots Fun Run
- ✓ Portola Valley Town Picnic
- ✓ Safe Sitter Training
- ✓ Car Seat Installs – 6
- ✓ Grandparents: Getting Started
- ✓ Fire Safety at Woodland – K-2nd grades
- ✓ Fire Safety Woodside 1<sup>st</sup> grades
- ✓ Day of the Horse
- ✓ Moulage workshop and practice with volunteers
- ✓ Fire Safety in the Home for Au Pairs
- ✓ Disaster Preparedness & Survival (2-day training)

## Meetings / Classes

---

- ✓ EPiC Officer Mtg
- ✓ EPiC Board Mtg
- ✓ Portola Valley Emergency Prep Committee Mtg
- ✓ Safekids Coalition Mtg
- ✓ San Mateo County CERT Coordinator Meeting
- ✓ WPV-Ready Committee Mtg
- ✓ EPiC Marketing Mtg
- ✓ WPV-CERT FF Rehab Workday
- ✓ Fire & Life Safety Educator 1C – Sept 30-Oct 4<sup>th</sup>
- ✓ Accela Training
- ✓ Microsoft 356 Training







# Woodside Fire Protection District Operations Division Report September 2024

Battalion Chief  
Vince Nannini

The Woodside Fire Operations Division roles and responsibilities are to provide an efficient safe operating strategy that adheres to County and District Policies and Guidelines. We also maintain our fleet and all associated tools and equipment to maintain a constant state of readiness. To respond not only in our fire district but throughout the County and State. The Operations Div. is also responsible for the Health and Wellness program, Safety Committee and loss reduction. Which contributes to the organization's success.

The Operations Division helps support a multitude of different areas within our organization to help accomplish our many goals. These areas include Prevention and Fuel Mitigation support, managing our Single Resource program and equipment, Recruit Academy support, The Operations Division Chief, while on shift, also sits on committees such as SMCO Operations Committee, Safety and Loss Reduction committee and Apparatus committee.

Below is the status of the fleet and equipment status and an update of ongoing projects for the month.

## Woodside Fire Operations

### A. Apparatus Committee: -

1. The Committee is in the process of designing a Type3 fire apparatus. We plan on using the CAL Fire specification and trying to get in on an order with them to keep costs down. Hope to present it to Command Staff in Oct.
2. We have a solution for our issue with "buddy breathing" with the new Scott air-packs. Training has been completed and we are waiting for two more adaptors. We are still waiting for these parts



# Woodside Fire Protection District Operations Division Report September 2024

Battalion Chief  
Vince Nannini

as there is a shortage. This has to do with Scott and their manufacturing.

3. OOC equipment has been inventoried and is ready for any deployment.
4. The Pierce manufacturing plant has started construction on new Engine 7. Anticipating a 6-8 month build time. We are still moving on schedule.
5. Apparatus Committee's next meeting 10/16/24.

## **B. Vehicles:**

1. Eng. 8 is back in-service.
2. Eng. 19 is getting pump packing serviced.
3. The reserve Rescue has been serviced and new breaks installed and is back in reserve status.
4. WT 108 is in for transmission work, it should be back mid Sept.

## **C. Shift Work:**

1. Wildland preparation continues as we are entering the height of the season.
2. Training on our new low-pressure nozzles has been completed and a flow test has also been completed. The calculations for a new pump chart have been completed and we will be switching over to the new hose and nozzle set up in early Oct.
3. Operations is the lead in developing a Wildland Taskforce in conjunction with the San Mateo County Opps. group for a Wildland Task Force to respond in the County. This would allow the Incident Commander quick access to specialized equipment and trained personnel if needed. This has been submitted to the Deputy Chiefs for approval.



# Woodside Fire Protection District Operations Division Report September 2024

**Battalion Chief  
Vince Nannini**

4. This month crews studied their primary radio frequencies and radio operations.
5. We have two members testing with the FAA to qualify for a Drone Pilots license. This process is 85% completed.
6. The DOC has received and is set up with Star Link.
7. County Operations meeting (09/19/24)
8. Board of Directors / Command Staff Meeting
9. Successor training with future BC's and Captains.
10. FF/PM Lohmann continues to work on his Acting Captains task book and is progressing well.
11. FF/PM J. Muela continues to work on his Acting Captain Task book and is nearing completion.
12. FF/PM Lory has been moved to Station 7 for his 3<sup>rd</sup> probationary block.

## **D. Health and Wellness:**

1. Safety / loss reduction meeting, scheduled for 10/24/2024.
2. Mobius Fitness continues to support our crews with yoga and stretching.



Woodside Fire Protection District  
Logistics Division  
Board Report September 2024  
Battalion Chief Robert Douthit

The Woodside Fire Logistics Division exists to provide oversight and organization to the maintenance and welfare of all Woodside Fire Protection District facilities, as well as the technology platforms necessary for our daily operations. We strive to provide the most current and relevant technologies and equipment to all our facilities and apparatus ensuring that our employees have everything they need to serve our community at the highest standard. We maintain our stations in a manner that would make the citizens we serve proud, and we ensure the safety of all who work in and visit our stations daily. We research and apply for grants with both federal and local governments to leverage available public funds to help augment the budgets needed for our mission and the collective mission of the WFPD. The Logistics Division continually looks for new methods to keep our facilities and our technological and operational capabilities current with industry best practices of the modern fire service as well as plans and anticipates for the operational growth and technological advancements of the future.



## **Facilities**

### **Station 7:**

- The re-keying project contract was signed for both stations 7 & 8 and the work will be scheduled when the parts arrive. We are still negotiating a contract for station 19.
- The Executive Casework group made a site visit and took final measurements for the mail center and bookcase for the library. They are currently in the production process with anticipated completion in October. Because of budget concerns the coffee/beverage station for the rear classroom foyer will be completed in the spring
- The lighting at the station was adjusted with the assistance of REG and Wattstopper. We may still need to dim the station light further particularly at night.
- Vance Brown made a warranty repair to the station 7 irrigation lines.

### **Station 19**

- The plans/drawings for the replacement of the fire alarm control panel have been approved by WFPD Prevention Bureau. Parts for the project have projected lead times of October 1<sup>st</sup> so work will begin in early October.
- The second phase of the landscaping project was completed including installation of weed cloth and decorative rock to the (now) empty planters in the station's zero space as well as replacing some of the

gravel groundcover on the perimeters of the station. Phase three (planting) is still being planned and budgeted for.

## **Station 8**

- Vance Brown made some minor warranty repairs to the station's parking lot curbs that had spalled.
- The station 8 firefighters are planning a station improvement project to install landscaping rock in the front of the station
- The new bedroom lockers will now be completed in the new year

### **IT Update:**

- Stepford continued its daily work to keep us operating and secure.
- New iPads were installed on all front-line apparatus as part of a 5-year replacement schedule
- The Green Team continues its work to create new wall maps for our stations. They are currently sourcing a vendor to create both frames and lighting for the various map installations.

### **Grant Opportunities**

The FEMA Assistance to Firefighters grant program has concluded its awards for the 2023 cycle and WFPD was not awarded. The new cycle will start up soon and we are considering what to apply for.

**Meetings attended:**

- Green Team Microsoft 365
- Green Team Wall Map/Preplans
- A-A Locksmith